

C.I.U 70p MARCH 2011

CLUB JOURNAL

THE PAPER FOR ALL C.I.U. MEMBERS

WHY YOU NEED TO SUPPORT THE UNION

(By permission of the Evening Chronicle, Newcastle)



John Masson examines the tankard from the Gateshead WMC.

What's it all about, Alfie?

INSIDE

AS we went to press there were rumours of delays to the ending of the default retirement age. As things stand, after next month, it will not be possible to force anyone to retire at 65. The new date would delay this by six months.

Full story – Page 12

THE Union is warning clubs that they must submit their annual returns to the FSA or face prosecution.

Full story – Page 14

DRANSFIELDS are the new sponsors of the CIU National Quiz. See Page 7.

News	2, 3, 6
Blackpool round-up	4
Letters	6
Education,	
Dransfields/CIU National Quiz	7
Saltburn House	8
Honours, Club Notices	8
National Accounts	9
Head Office memories	10, 11
Club Management	12-14
Obituaries	13
Crossword	14
Club Outings	15-17
Classified Advertising	18
Sport	18-20
CIU Racing Club	19

A TANKARD awarded as a prize at a social club more than 140 years ago has left historians and antiques experts puzzled.

Full story – Page 6

CLUBS owed back tax on their fruit machines will need to fight to make sure they receive their money.

In October we reported that hundreds of clubs would receive a windfall from the Government after the Union teamed up with gaming machine suppliers Dransfields to fight what became known as the Linneweber case.

Clubs who made a valid claim in the time limits were in line to receive cheques from Her Majesty's Revenue & Customs (HMRC) and some have already received four-figure amounts.

Although HMRC accept that they will have to repay all validly-made claims they are not, however, putting themselves out to make it easier for clubs, says VAT expert Ian Spencer of Ian Spencer & Associates.

DELEGATES head to Blackpool next month for what could be one of the most important conferences in the Union history.

The Union is losing around £1 million a year and clearly this cannot continue for long. The National Executive have taken difficult deci-

By Mick McGlasham
GENERAL SECRETARY

sions and sacrifices have been made as more long-serving Head Office staff have been made redundant. The Executive themselves will have their numbers cut at this year's elections.

I know the difficulties clubs are facing but if you want the Union to continue then you need to show the same commitment. At the moment the Union receives only an annual fee of 30p per member plus a dwindling amount from Pass Card

sales and we propose that is increased to 50p per member, including women members.

Last year delegates rejected the idea that every member should support the Union by paying £2 for a Pass Card – less than what they probably save every week by drinking in a club. In that context 50p per member represents a bargain.

At the moment 30p a member buys you among other things:

- free management advice
- the biggest programme of sporting competitions in the country
- the Rules department, which can save you a fortune in solicitor's fees
- influence in Parliament through the All-Party Group of MPs
- better deals on insurance, racing trips, rates and many other products. See Page 9 in this issue to see how a club has saved £10,000 on its heating.

PAGE
4

CLUBS FIGHT FOR BACK TAX

“Dealing with HMRC is not straightforward. They do not appear to be paying interest unless you ask them. They are rejecting claims that are not properly made and are also rejecting claims unless clubs have submitted an appeal.”

The Linneweber case is named after German Edith Linneweber, who won a tax case in the European Court of Justice. Dransfields Director Chris Haley spotted the decision back in 2006 and saw the opportunity for clubs. Dransfields advised their customers to put in protective claims and have worked closely with clubs and the CIU.

A lead case against HMRC was taken through the UK courts by Rank plc last year and won and although HMRC have appealed to the European Court of Justice this is unlikely to take place in the near future so HMRC have started payments. Money might have

to be repaid back to HMRC if they win but most commentators think this is unlikely.

An HMRC Brief confirms they accept the court decision and aim to process all existing claims by March 31, 2011. But, says Ian Spencer, what is not made clear in the Brief is that while HMRC will also pay interest they will do their best to minimise the amounts they have to repay.

“HMRC do not appear to be paying interest at the same time they repay the tax claimed. It seems that you have to ask for this. I have acted for one club that was not repaid interest and then received payment of an amount equating to 16 per cent of the tax repaid; the only action required was to write to HMRC and ask for this.

PAGE
13

IT'S BUSY IN DURHAM . . .



DURHAM Branch President Colin Armstrong visited Evenwood WMC and presented awards marking 60 years of service.

Committee member Ronald Preston (top left) received the 25-year Long Service Award while Olive Lamb accepted a Long Service Award on behalf of her late cousin Thomas David Lamb. John Firby also received the 10-year Certificate of Merit.



BRANCH Secretary Brian Young (below) visited Harrogate WMC in Darlington and presented a Long Service Award to Club President Martin Duell, watched by Treasurer Dave Cartwright and Branch Vice-President Eric Campbell (right).

On the same night Dave Cartwright presented a giant bottle of vodka and a bouquet to Maureen Grindley (above) to mark 40 years of service to the club.



GENERAL Secretary Mick McGlasham was among the guests at Belmont Club near Durham when Committee member Bobby Sloanes received the Long Service Award and Treasurer John Bell the Certificate of Merit.

At the same time the club also presented a 10-year staff service award to barmaid Becky Shaw.

Bobby Sloanes, Becky Shaw and John Bell are pictured in front of (left to right): Mick McGlasham, Eric Campbell, Colin Armstrong, Executive member Keith Reay, Club Chairman Alan Robinson, Secretary Edwin Metcalf and Assistant Secretary Henry Robinson.

HAYES WORKING MEN'S CLUB LATE NIGHT CABARET

- SATURDAY 26th MARCH -
 JACKSON LIVE (MICHAEL JACKSON TRIBUTE)
 ERROL BROWN TRIBUTE
 TAKE COVER (5 PIECE BAND)

- SATURDAY 30th APRIL -
 RATS IN THE KITCHEN (UB40 TRIBUTE)
 THE TEMPLE BROTHERS (EVERLY BROTHERS TRIBUTE)
 GLAMTASTIC ROCK SHOW (GLAMROCK TRIBUTE)

- SATURDAY 28th MAY -
 DOCTOR & THE MEDICS (THE ORIGINAL BAND)
 HARRY CAMBRIDGE (LUTHER VANDROSS TRIBUTE)
 THE USUAL SUSPECTS (DUO)

ALL SHOWS COMPERED BY TERRI GAUCI
 ALSO SPECIAL COCKNEY NIGHT ON SATURDAY 23rd APRIL
 FREE ENTRY (COACHES BY ARRANGEMENT)

PUMP LANE, HAYES, MIDDLESEX UB3 3NB

ALL SHOWS £8 PER TICKET (OVER 18 ONLY)

Bar open until 1.00 am - Doors open 7.00 pm

Coach parties welcome by prior arrangement - please contact Secretary for information and tickets on:
020-8573-1721

... AND IN KENT AS WELL



KENT Branch President Roger Tingley visited Sturdee Bowling & Social Club in Gillingham and presented a Distinguished Service Award to Trustee Desmond Watts.

Desmond was elected to the Committee soon after he joined the club in 1947. After a spell in the Army he returned to the Committee on the entertainments side then became a Trustee in 2000.

Also pictured (below) are: Branch Vice-President Colin Lewing (left), who is also the club's Vice-President, and National Executive member Roger Oake.

• Bottom: Roger Tingley also presented a Distinguished Service Award to David Gower, Secretary of Saltwood Club near Hythe.



UNION Vice-President John Tobin and members of the Kent Branch Executive helped the Bellegrave Social Club near Bexley celebrate its centenary.

Branch Executive members Roger Oake, Colin Smith, Nobby Clark and Tom Jones were pictured with members of the club's Committee as the Vice-President presented the Union's centenary certificate to Club President Paul Simpson. The club was built as one of a series of elegant villas

in 1820. In 1840 speculator Edward Penfold turned it into a pub called The Old Fox and it became a popular destination for excursions until the turn of the century when the arrival of the railway led to the countryside being swallowed up by the expansion of London.

Whitbread took over The Old Fox in 1895. It became known as Foxberry House and in 1907 the Bellegrave Labour Club, then the Bellegrave Social

Club. The original building still remains in the same form as when it was built.

Committee members Christine Gabriel, Linda King, Pat Moore and Barbara Robb are pictured in front of: (left to right) Colin Smith, Nobby Clark, Bill Stevenson, Club Secretary Rogan Gabriel, Tom Jones, John Tobin, Paul Simpson, Peter Carter, Ron Waghorn, Roger Oake, Keith Watkins and Duncan Smith.



Club Lotteries

Pay as you go...





Introducing the brand new 'Pay As You Go' lottery machine from Thomas and Anca Club Supplies - with the added bonus of a change machine. This exciting concept enables your club to simply pay for each ticket you dispensed - meaning no upfront charges of boxes of tickets.

- No Initial charge for tickets
- Optional Note exceptor
- Club only pays for tickets dispensed from machine
- Optional change machine
- View your ticket sales and cash taken on you own club web account
- Automated re-ordering of tickets
- Club pays at end of the month according to number of tickets sold.

Call us now on **01634 726902**

No more large bills to pay...meaning more money in **YOUR** bank

– PROVISIONAL AGENDA FOR ANNUAL MEETING –**SESSION COMMENCES 10am, 9th APRIL, 2011.**

1. Minutes of the Council Meeting held 10th April 2010.
2. Civic Welcome by The Worshipful the Mayor of Blackpool, Councillor Don Clapham B.Sc (Hons).
3. Standing Orders Committee.
4. President's Address.
5. Scrutineers announcement.
6. Presentation of Club Management Diploma to 1st Prize Winner.
7. Simon Clark – Save our Pubs & Clubs Campaign.
8. To consider the Annual Report 2011.
9. To consider the Union's Financial Statement for the year ended 30th September 2010.
10. Proposition by the National Executive Committee:

Rule 10

To increase the per capita fee from 30p to 50p.

11. Motions for amendments to Union Rules – Proposed by the National Executive Committee.

(i) Rule 10**The rule currently reads:–**

“A club shall subscribe to the funds of the Union an annual fee of such sum as may be agreed from time to time by a Council Meeting, representative of a club's male membership, at a rate not exceeding 50p per member. There shall be a minimum annual fee of £75.00 per club. The Annual Fee shall be due on the first day of October each year, or in the case of a club being admitted to membership, on the date it is admitted.”

The proposed rule to read:–

“A club shall subscribe to the funds of the Union an annual fee of such sum as may be agreed from time to time by a Council Meeting, representative of a club's full membership, at a rate not exceeding 50p per member. There shall be a minimum annual fee of £75.00 per club. The annual fee shall be due on the first day of October each year, or in the case of a club being admitted to membership, on the date it is admitted. The annual fee will apply to all members.”

(ii) Rule 16(a) (as amended and registered on 6th December 2005) line 1-7**Delete the following words:–**

“(a) Associate Cards at the price of £2.55 each and Pass Cards at the price of £2.55 per year (plus VAT at the prevailing rate) shall be supplied to clubs which are members upon condition that holders of such cards (in these rules called “Associates”) conforming to the regulations relating thereto shall be admitted by such clubs to the club premises.”

and substitute the following words:–

“(a) Associate Cards at the price of £3.50 each (inclusive of VAT at the prevailing rate) and Pass Cards at the price of £3.50 per year (inclusive of VAT at the prevailing rate) shall be supplied to clubs which are members upon condition that holders of such cards (in these rules called “Associates”) conforming to the regulations relating thereto shall be admitted by such clubs to the club premises.”

(iii) Rule 37 (as registered on the 10th June 2009)**Delete the following Rule:–****“Interpretation Rule”**

“Where reference to male member appears, the wording shall be deemed to include female, unless the contrary intention appears and the rule changes only apply to those who are full members of their club. The rule will not apply to Rule 10 within these rules.”

and substitute the following Rule:–**“Interpretation Rule”**

“This rule applies to all members. Where reference to male members appear, the wording shall be deemed to include female.”

IMPORTANT DAY AT BLACKPOOL



If the Union ceases to exist these services will cost you more. There will be no voice in Parliament to put your view to the Government.

They have accepted our view that minimum pricing of drinks in supermarkets is the way forward but have adopted it in a feeble manner. The Union is also behind the gathering momentum to amend the smoking ban and we hope by inviting Simon Clark of Save our Pubs and Clubs to address the conference to keep up the pressure.

Last year only one speaker argued against the notion that all users of clubs should buy a Pass Card. Delegates were swayed by a picture he painted of an aged member struggling to the club on sticks and being asked to buy a Pass Card – when as a life member he probably wouldn't have needed one anyway.

The Union's founders left a system where its members supported the Union with their Pass Cards and clubs would vote to decide how much income it would have. They never envisaged that members would wriggle out of buying the Pass Cards and that the Union's very survival would rely on appealing to the better natures of the delegates who come to Blackpool.

We have cut costs to the bone to try to keep your Union working and fight-



George Dawson makes his first Presidential Address at last year's Conference.

ing for you. As delegates we need you to show some similar commitment.

● As well as the Annual Meeting at the Winter Gardens on Saturday, April 9, Blackpool also hosts the first regional heat of the CIU National Quiz on Thursday, April 7 and the 20th CIU Beer & Trades Exhibition at Blackpool Pleasure Beach on Friday, April 8. The provisional agenda is reproduced on this page, details about the quiz can be found on Page 7.



Union Vice-President John Tobin pours the first pint at last year's Beer & Trades Exhibition watched by Heineken UK Buying Group Director Peter Usher and supervisor Kenny McKenzie.

THE 20th CIU Beer & Trades Exhibition will again be staged in the Paradise Room at Blackpool Pleasure Beach on Friday, April 8, the eve of the conference.

As ever the exhibition provides an excellent chance for delegates to meet firms providing services for our clubs and their members and for those firms to meet members of the National Executive.

Companies that have already booked space at this year's exhibition include:

Heineken UK
BOC
Envtec Services
Dransfields
Ace Furniture
Peeks
Campaign for Real Ale
CIU Insurance Services
Racing UK
The Co-operative Bank
Cellarbright
Access 2 All

Heineken UK



John Smith's still leads the field in support for clubs and members



WINNERS: Clubs across the country can benefit from a number of horse racing promotions linked to the John Smith's Grand National at Aintree

The UK's favourite and biggest-selling bitter, John Smith's, is driving investment in the ale sector by once again stamping its 'No Nonsense' mark on a range of high profile national marketing campaigns and events as well as business-building activities tailor-made for the club sector.

Nationally, a multi-million pound investment in the brand sees the return of northern comedian Peter Kay in the award-winning series of hilarious television ads which highlight the matter-of-fact loyalty of 'man's best friend'.

In addition to this, the continuation of the brand's long-



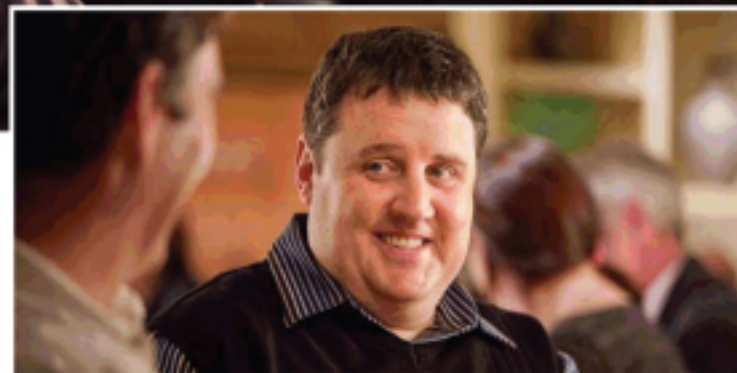
standing sponsorship of the John Smith's Grand National at Aintree and more recent positioning as the Official Beer of the Lakeside BDO World Professional and Winmau World Masters Darts



TOP MAN: Much-loved funnyman Peter Kay is back as the 'No Nonsense' face of John Smith's in a multi-million TV advertising campaign

Championships, present the perfect opportunity to bring more horse racing and darts activities to clubs across the country.

Peter Usher, Heineken UK Buying Group Director, says: "This year we are investing heavily in brand and consumer activity for our No.1 ale - significantly more than our competitors are - and this means we are able to offer far more



support to clubs and their members in terms of promotions specifically aimed at increasing footfall and turnover.

"Our new advertising puts John Smith's firmly at the top of the 'must-buy' list with consumers and our high profile sponsorship activities, both in horse racing and the world of darts, mean we can bring all the excitement of two of the licensed trade's favourite sports right through the door of every club that sells the market-leader.

"As well as increased footfall, there will be local marketing support for clubs exclusively stocking John Smith's and the opportunity for new stockists to take part in our popular in-club promotions.

"The continued popularity of our Race Nights and Smithy The Racehorse activities coupled with the huge success of our John Smith's People's Darts Championship make this the time to make sure you stock John Smith's.

"No Nonsense. If you don't, your members will be missing out!"

● If you would like to find out more about these activities, to stock John Smith's or to arrange a meeting, please contact Heineken UK Buying Group Director **PETER USHER** on **07831 840330**.



MONEY-MAKERS: Clubs will be able to take part in promotions centring around horse racing and darts

IF YOU AREN'T SELLING JOHN SMITH'S YOU ARE MISSING OUT ON A GREAT SUPPORT PACKAGE TO INCREASE YOUR TURNOVER
Call Peter Usher on 07831 840330 to discuss stocking the market-leader

TANKARD PUZZLE

Laugh in Bath

COMICS Jo Caulfield, Toby Longworth and Mark Olver are among the acts appearing at Widcombe Social Club in Bath during the city's Comedy Festival next month.

The club, whose Committee includes the Festival Director Nick Steel, is staging comedy events from April 1-10.

More information on the club can be found in our *Club Outings* section on Page 17 or on their website: www.widcombesocialclub.co.uk



AN ANTIQUE dealer is appealing for information about a prize tankard awarded to a comic singer at a club more than 140 years ago.

John Masson bought the tankard in a fair at Richmond in North Yorkshire. It has the inscription "Won by Alf Devonport for the best comic singer at the working men's club, Gateshead, December 28, 1868" so he contacted the Newcastle *Evening Chronicle* to see if club members on Tyneside could give him more information.

Wappat

"I wondered if Alf Devonport was a regular turn or whether he was somebody who got up and sang his party piece after a couple of pints at Christmas," he said. There has been a suggestion that he was a music hall performer so John has been in touch with veteran local radio presenter Frank Wappat.

The Gateshead WMC was one of the oldest clubs in the Union. It was founded by local MP William Hutt and the Rev. Henry Solly, only four years after he founded the CIU in 1862. Its first President was railway administrator Henry Tennant.

Calling submariners

THE Submariners Association is trying to ensure that all serving and former submariners are aware of their presence. The Association has an excellent networking system for contacting former colleagues and a national reunion once a year where comrades meet and reminisce over a few beers.

For more information see their website or write to John Wood at 13 Westbrook Avenue, Margate CT9 5HA, email: slinger165@btinternet.com

LETTERS . . .

Dear Sir,

I WAS delighted to see your front page article setting out how the Conservative-led government has bottled the introduction of a minimum price for alcohol. On February 2 I secured a parliamentary debate on minimum pricing after the Government opted for a minimum price of duty + VAT. I see this as woefully inadequate.

The British Crime Survey shows that half of all crime is alcohol-related and the annual cost to the NHS of alcohol misuse is £2.8bn. So I do not believe that a minimum price should take no

account of production and distribution costs.

Another consequence of the so-called pocket money-priced alcohol on offer in supermarkets is the demise of local pubs and clubs, which are generally a place of responsible drinking (my own Dad was a publican after he was a steelworker and before he became a bread delivery man). So I wish Shaun Whitaker every success with his "Save the Working Men's Clubs." campaign on Facebook.



Nick Smith MP
(Blaenau Gwent)

Dear Sir,

THE Save the Working Men's Clubs campaign has already attracted more than 1,500 members on Facebook and now has an official petition on the site and a campaign song.

Norma Barker, who runs the Nottingham Entertainer Magazine hunted high and low for a song that suited the group's campaign videos before settling on Brian McKnight's song "Win".

Artists are going to sing the song around clubland informing the audience of its relevance. Doncaster radio station Sine Fm has come up trumps with a recording studio to promote the song, which is also being used as the music to three videos promoting our group on YouTube.

We have also produced a poster/flier that will be distributed

around clubland by agents and entertainers. The plan is to print 2,000 and put 100 in 20 venues. The entertainer will then take some to their next venue and so on. The poster is available for anyone to download and photocopy. We hope that within six months there will be one in every venue in the UK.

On top of all this, we have yellow ribbons with the slogan "Save the working men's clubs and the entertainment industry" printed on them as our profile pictures. This was thought up by Laura Magann from the group and it looks like we'll be getting these made to help the campaign, too.

So, don't hesitate, find us on Facebook and join our campaign.

Shaun Whitaker
Intake Social,
Doncaster

Smoking debate continues

Dear Sir,

I WAS until recently the President of Bexleyheath WMC in Kent. The vast majority of our members and associates applaud the smoking ban. Not smelling of smoke when one gets home, sitting in a comfortable environment while socialising and generally being healthier are the bonuses of the ban.

We turned the outside barrel storage area into a smoking area as it would not have been possible to build or provide an indoor room. It was suggested if the law changed that our lounge/games room be a smoking area. That would mean that non-smokers would be denied Sky football and participating in the games section.

I think that if a referendum was undertaken the vast majority would not favour a return to the old days of smog and coughing.

Bob Greenhead JP, CMD

If club members voted on whether smoking be allowed throughout the club, it is obvious that with about three quarters being non-smokers there would only be one result. If members voted on having a room set aside for smokers, I suspect the result would be completely different.

I don't smoke but I do not castigate or vilify those who do. We live in a society where diesel fumes far outweigh any possible damage or smell that a cigarette may exude. Should we vote to ban all lorries, buses and cars?

I agree we should keep some rooms smoke-free in our clubs but let us also have a smoking room for members who do enjoy smoking. We might, then, see a drop in the horrendous numbers of closures. For me, my club comes first, not some misguided selfish ideal.

Phil Johnson,
Saffron Lane WMC, Leicester
Chairman, Freedom2Choose

Dear Sir,

I WAS appalled at the views of R W Barnett (Letters Feb) on smoking in our clubs. You, Mr Barnett, have obviously seen a decline in attendances in Rushden, as I have in Leicester.

This is because many smokers no longer bother to brave the elements to enjoy what is perfectly legal. Supermarkets provide a cheap alternative and smokers have gladly accepted.

LETTERS to the Editor should be sent to: The Editor, Club Journal, CIU, 253 Upper Street, London N1 1RY or preferably emailed to: info@wmciu.org or cj@powdene.com

Trent Pottery & Furniture

email:

sales@pubfurnitureuk.co.uk

web:

www.trentpottery.co.uk

tel:

0116 2864911

fax:

0116 2867286



BQ/5 uph in fabric D's below.

Normally **£33.90**
Reduced to **£22.90**



BQ/7 uph in fabric D's below.

Normally **£36.90**
Reduced to **£22.90**



BQ/2 Black or gold frame in any of the fabrics shown below.

Normally **£21.90**
Reduced to **£13.70**



BQ/1 Black or gold frame uph in the D fabrics below.

Normally **£21.50**
Reduced to **£12.90**



150D 151D 152D 153D 154D

Weekend on the money ~ and the law

THE Union is holding a combined Club Law and Club Finance Weekend at Saltburn this month.

The course, from March 18-March 20 is an excellent chance to improve your knowledge of club management and benefit your club in these difficult times. The courses are led by experts in their fields and are particularly valuable to those revising for the Club Management Diploma.

The weekend also offers the chance to sample all the facilities of our holiday and convalescent centre, Saltburn House on the



Saltburn Pier

beautiful north Yorkshire coast. As well as working hard during the day, students can play hard in the evenings.

Many friendships have been made on our courses, which have proved invaluable through the years.

Thanks to the sponsorship of Heineken UK the cost is only £60 for full board. Students must, however, meet the cost of their fares.

An application form has been sent to every club. To obtain another one or for more information ring the Education Department on (020) 7226 0221.

Q. Who is our new sponsor?

THE CIU National Quiz starts its 12th year with new national sponsors – gaming machine suppliers Dransfields.

Thanks to Dransfields the Quiz will continue to offer excellent prizes, with a top prize of £500 in the final and £160 in each of our regional finals, which begin at Stanley Road WMC in Blackpool on Thursday, April 7.

Director Chris Haley said: “The National Quiz is now an established part of club life and we are delighted to support it.”

As ever the emphasis will continue to be on fun with entertaining questions, prizes for sport and TV & films well as our cheeky spot prizes for the closest guess to such questions as “how many components are there in a Won-

derbra?” (42, the same as the meaning of life).

To ensure we only have serious entries clubs do have to send an



entry fee of £10 but this does include a buffet meal for teams and their supporters.

Other regional finals will be held in Leatherhead, Surrey; Northampton, Newport, Wakefield and Newcastle. The top three from each final will go through to the national final in Derby on Sunday, September 18.

To enter fill in the form on this page and return it to Chris Brewis at *Club Journal* by March 31 with a cheque for £10.

★ **CIU NATIONAL QUIZ** ★



2011 CIU NATIONAL QUIZ ENTRY FORM

We wish to enter a team in the 2011 Dransfields CIU National Quiz

Name of Club

Address

..... Postcode

Contact name

Daytime tel. no Email

Our team of four will be selected from the following (maximum six). Please give Christian names (not just initials).

.....

.....

~ Closing date for entries: March 31, 2011 ~

I certify that the team members are at least 18 years old, they are members of this club and hold Associate Pass Cards for 2011 issued by this club.

I enclose a cheque for £10 made payable to Powdene Publicity Ltd.

I would like to increase the club's order for *Club Journal* to copies at 70p each plus one free copy. (Head Office will invoice you for this).

Date

Secretary

Secretary's name (please print)

Return to: Chris Brewis, CIU Quiz, *Club Journal*, Unit 17, St Peter's Wharf, Newcastle NE6 1TZ by March 31, 2011.

Telephone: (0191) 265 0040 email: cj@powdene.com



for April **FUN!**

...it has to be *Peeks*

Save on carriage... **Buy for Both at the Same Time!!**

• Pub & Bar Decorations • Theme Decorations • Novelties • Fancy Dress and sooo much more!

order anytime online www.peeks.co.uk Reid Street, Christchurch, Dorset BH23 2BT t:01202 489489

23rd April St George's Day

29th April The Royal Wedding



GOODBYE, ALLISON HELLO, ANDREW



Bookings Administrator Allison Littlefair has left Saltburn House on maternity leave to have a baby daughter.

WE have seen a few changes at Saltburn House, the Union's holiday and convalescent centre on the beautiful north Yorkshire coast.

We have recently said goodbye to our Bookings Administrator Allison Littlefair as she has gone on maternity leave to have a new

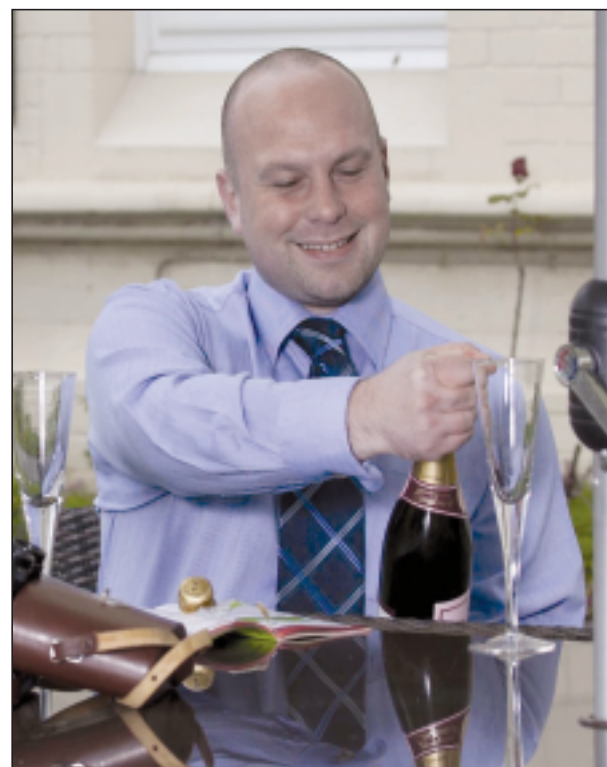
SALTBURN HOUSE
Valda Edmunds

baby daughter. We would all like to wish Allison

the best of luck with her new arrival and encourage her to hurry back to us and get back in the office where she belongs! Good luck, Allison, your departure will be greatly missed.

As one goes, another arrives. We would also like to welcome Andrew Alton on board as our new Assistant Manager. Andrew will be assisting Maxine Howes with the running of the centre and covering for Allison during her maternity leave.

We wish both of them the best of luck!



New assistant manager Andrew Alton will be covering for Allison while she is away.

HONOURS

Branch Award Branch Executive 31-year Award

Roy Marriott, Derbyshire Branch.
Brian Olnor, Warwickshire Branch.
Branch Executive 21-year Award
Mark Brewer, Western Counties Branch.

Distinguished Service Award

Matthew Birch, Grindon Broadway Social Club, Co. Durham.

Long Service Award

Brian Waterfield, Northampton BRLMR Sp.&Soc. Club, SE Midlands.
David Stenton, Bramley (Rotherham) WMC, S. Yorks.
Gary Tipple, Bramley (Rotherham) WMC, S. Yorks.
Allen Rowley, Grendon WMC, Warks.
John Gee, Wilnecote WMC, Warks.
Ronald Bradley, Wilnecote WMC, Warks.
Stephen Gooch, Wilnecote WMC, Warks.

Certificate of Merit

Christopher Halliwell, Hove Edge Bowling & WMC, W. Yorks.

Robert Webster, New Brancepeth Club, Co. Durham.
Paul Eastlake, Seaton Delaval Social Club, N'land.
Kenneth Newton, New Hirst & Dist. Club, N'land.
John Lord, Throckley Union Jack Club, N'land.
Andrew Brennan, Merchiston Hearts Social Club, Scottish.
Richard Hutt, Northampton BRLMR Sp.& Soc. Club, SE Midlands.

Club Notices

EXPULSION Not now members of the following clubs.

These should not be admitted as Union Associates.
Peter Tillman (670) Blackheath Newbridge Club, Kent.
Mr R Webster (33) ASE Club, Darlington.
Ms Linda Howarth (377) Latimer Ward Conser-

● The Distinguished Service Award is for those rare club members who have served their club in an official capacity for at least 40 years.

The individual applying for the Award must have held an Associate and Pass Card for at least the last 20 years; and his

club must have been affiliated to the Union for at least 25 years.
The Long Service Award is granted to club members who have given at least 25 years' service and the Certificate of Merit to those who have given at least 10 years' service.

native Club, Leics.
Mr M Nixon (649), Eltham Hill Club, Kent.
Mr J Reed (444), Eltham Hill Club, Kent.
Mr P Pell, Prudhoe Social Club, N'land.
Mr T James (508) Eltham Hill Club & Institute.

SUSPENSION
Ms J Kell, (508), Eltham Hill Club, Kent (suspension period not stated).

CLUBS ADMITTED
Wellfield WMC, 1 Prince Street, Rochdale OL16 5LL. (Manchester Branch).
Yateley Social Club, Village Hall, Old School Lane, Yateley GU46 6NG. (Wessex Branch).

CLUBS CLOSED
Abercynon Ex-Servicemen's Club. (South Wales).
Abercwmboi RBL Club. (South Wales).
Newbiggin Central & District WMC. (N'land Branch).

CLUB WITHDRAWN
Brockworth & Whitcombe RBL Club. (Western Counties Branch).

● Saltburn House offers quality en suite accommodation at incredible value with the chance to meet like-minded people. Why not come and see what we have to offer or try one of our special breaks. All prices are in the panel below.



CIU SALTBURN CENTRE

2011 PRICES AND THEMED BREAKS

To book please ring 01287 622 008

MARCH-DECEMBER

Non-member B&B = £36; Non-member half board = £42;
Club member half board = £32; Convalescent stay = £29

Club parties over 15 people: £25 per person with one room free.

Club parties over 35 people: £25 per person with two rooms free.

RACING BREAKS

Monday 13th-Wednesday 15th June, (Thirsk and Ripon) £160.

Monday 22nd-Wednesday 24th August, (Sedgefield and Catterick) £160.

Thursday 25th-Saturday 27th August, (Thirsk and Redcar). £160.

Three and six-day racing breaks available. Price for both August racing breaks £300.

GOLFING BREAK

Sunday 3rd July-Saturday 9th July. Wilton, Hunley Hall, Saltburn, Hartlepool and Seaton Carew. £245 full week. 4-day golfing £170.

TURKEY AND TINSEL

Monday 28th November-Friday 2nd December. £155.

Friday 9th December-Tuesday 13th December. £155.

New Year Party £155.

All prices include VAT

NATIONAL

ACCOUNTS

IN ASSOCIATION WITH

CIU Insurance Services

HOW WE SAVED THE ENGINEERS £10,000

DERBY Engineers Club is saving more than £10,000 a year – thanks to National Account company Envtec Services and *Club Journal*.

Club President Keith Jordan rang Envtec after reading in last July's *Club Journal* how the CIU-recommended company had saved Acomb WMC in York nearly £10,000 in seven months, and was given a prompt and free Energy Management survey.

"Envtec visited me at the club and after a consultation they were able to return to me with a full detailed report on where and how we were wasting the majority of the club's money.

"I was absolutely astounded at the savings that we could make! If we simply changed our old cellar cooler, our ancient air conditioning system and lighting we would save in excess of £10,000 a year."

Keith took over the reins as Club President a few years ago, after having had his own successful business, so he knew that rocketing gas and electricity bills were among the first things that needed addressing. "The bills had increased year on year. I turned first to our energy supplier thinking that a decrease in our rate would help; but after a few months it became clear that with the extremely cold spells in weather that we have had it was just a drop in the ocean and what we

were saving made little difference".

It was in July that Keith picked up a copy of *Club Journal* and read how Acomb WMC had already saved nearly £10,000 in seven months. He didn't hesitate to pick up the telephone.

"I knew that this was the best saving for the club I had come across in my time with them and what's more it could be done in a way that wouldn't disturb the club or disrupt our members.



Derby Engineers Club President Keith Jordan, is delighted with the club's energy-efficient climate control system – and members are spending more because the club's warmer.

"Envtec were fantastic, they helped me obtain interest-free funding for the project; with the huge savings we are going to make we are able to pay this back quickly out of our savings. In reality

the brand new system will have cost us nothing and we are already seeing considerable savings in our first bills.

"We are absolutely thrilled; our members have been overjoyed with how warm and inviting the club has been through all of the bad weather, even staying longer – which is just the icing on the cake for us."

Sales Director Philip Towndrow said: "Unfortunately rises in energy prices are crippling what is an already tender club market. The more that we can work with people and help them understand the help that is out there the better as most clubs are totally unaware of how to buck the trend and make the savings that their club deserves.

"Our expertise in obtaining the interest-free funding has continued to grow where many other companies have not succeeded, as it can be a complex process."

Approved National Accounts Supplier

Envtec Services Limited

01455 82 11 77
info@envtecservices.co.uk
www.envtecservices.co.uk

Warm Air Heating

- Replace old boilers with energy efficient heating
- Saves up to 70% on current heating bills

Air Conditioning

- Creating a cooler, cleaner, fresher environment

Boiler Replacement and Servicing

- Maximise the fuel efficiency of existing boilers

Energy Efficient Lighting

- Save up to 60% on lighting bills
- Replace old fittings with new or simply convert existing fittings

Cellar Cooling

Utilise energy efficient technology on one of your most used electrical items

Service and Maintenance

- Planned preventative maintenance is the most efficient way to get the most out of your equipment
- Emergency and breakdown cover
- F-gas approved on all refrigerant based products including Air Conditioning, Cellar Coolers, Refrigerators etc...



Envtec Services Limited

Do you need help?

DOES your club need the same help? Here are a few points to consider; if you answer yes to any of the following contact Envtec Services for your free advice.

Are you concerned about the already high and rising fuel bills for your club?

Is your heating system more than eight years old?

Is the club cold in the winter and warm in the summer?

Are you heating the whole club when using just a few rooms?

For further information visit www.envtecservices.co.uk or ring (01455) 821177 or email info@envtecservices.co.uk

60s MEMORIES FROM TW



Frank Castle MBE, General Secretary from 1951-1964 (left) and John Holmes, General Secretary from 1965-1973 were "hard men", writes Nick, "whose bark was probably a lot worse than their bite."



THE year 1962 is noteworthy for many reasons: The world teetered on the brink of a nuclear war over the Cuban missile crisis, Nelson Mandela was jailed in South Africa and an obscure band called The Beatles released their first single "Love Me Do" on the Parlophone label.

Strangely, historians seldom if ever make mention of one of the most significant events in post war British history – the move of the Club & Institute Union headquarters in London from Clerkenwell to Upper Street, Islington.

At the time I was 21 and new to London, having moved from Hitchin in Hertfordshire to the Big City. I was sharing a flat in Marchmont Street near the British Museum with two older women (don't ask – it's too complicated).

I went job hunting and soon found myself holding the position of Assistant Stores Manager at the CIU headquarters in Clerkenwell Road, EC1, appropriately enough near the junction with Rosebery Avenue.

The Victorian premises were dusty and dilapidated. There was a passenger lift and a goods lift, both of which made ominous creaking noises, convincing me that some vital component – such as the main cable – was about to fail, causing me to hurtle in a downward direction to a ghastly and premature demise.

Oddball

The Stores Manager was a fine fellow called Harry Barnes. We had two staff, one of whom was named John G Sweetlove. John was a nice guy, a colourful and oddball character, but a complete scatterbrain, and he never ceased to amaze me.

There was a cheap and cheerful café across the road. One day, John went there for his morning tea break and, on his return, I told him that his wife had phoned and asked him to call back.

He picked up the phone and after a moment put it down again, mumbling that he would phone later. I said: "John, your wife said it was fairly urgent. I think you should call her now."

He picked up the phone again, frowned and put it down again. "John," I said, "What is the problem?" He replied: "I can't remember my phone number."

There was an occasion when Harry sent John on a short bus ride to Oxford Street to buy something. It should not have taken very long. After an hour he had not returned and we were becoming concerned.

Eventually the phone rang:



Nick Murray is one of the few remaining people to have worked at the old Head Office in Clerkenwell (left) and at the current Head Office in Islington (above).

"Hello, this is John G Sweetlove calling. Where was it you wanted me to go? I've forgotten."

"Oxford Street," yelled Harry, "Where are you now?" "Er . . . Battersea."

This was miles away south of the river. Harry went ballistic. I'd better not quote his exact words in case ladies of refinement are reading this.

We had regular deliveries of bingo books that we would label and despatch to CIU clubs throughout the country. The Cumbria Branch had originally been the Furness Branch and there was one club that John would insist on addressing as: "Barrow in Furness, Furness."

I couldn't convince him that he didn't need to write the extra "Furness" just the county. It was obvious that Barrow in Furness must be in Furness because it said so.

Eventually I gave up and hoped that, at any rate, it might amuse the Lancashire postmen.

John was occasionally a bit of a skiver. The bingo books arrived in a lorry load of cardboard boxes each weighing nearly six stone (38 kg).

Every week, whenever the wagon arrived, John would spot it and rapidly disappear to the toilets, leaving three of us and the driver to do the unloading.

One day, Harry explained this to the driver who laughed, said he was in no rush (parking restrictions weren't so strictly enforced in those days) and went across the road for a cup of tea.

When John returned 20 minutes later and realised he'd been caught out, his facial expression – a cocktail of guilt and embarrassment – was a joy to watch, especially when the driver said: "Hello mate!

I haven't seen you before. Are you new?"

Eventually the big day arrived when we started to move to our brand new purpose-built premises in Upper Street, Islington near Highbury Corner. The office staff had already moved in while we were still working overtime to sort out the stores.

One evening we saw a mouse running around in the basement. With a single swift and well-aimed missile Harry despatched it to its maker. Rather than disposing of the corpse, however, we decided it would be a hilarious notion to put it in one of the girls' desk drawers upstairs, anticipating a scream of horror next morning.

Prime Minister

Frustratingly, we never did find out what happened. I thought that we'd be the obvious prime suspects but nobody said a word about it, and we didn't want to incriminate ourselves by asking.

The stores were up and running when, on June 14, 1962 we were honoured to be visited by Lord Rosebery who was to perform the opening ceremony. He was the descendant of a previous Lord Rosebery, a Victorian Prime Minister, who before that had been CIU President.

His lordship was greeted in the reception area by the General Secretary Frank R Castle MBE and our legal expert J B Holmes (who became General Secretary in 1965).

We watched as the three of them got into the passenger lift on the ground floor to go upstairs. Unfortunately for them, the lift went down to the basement first before returning up to the ground floor a few moments later. The doors opened again revealing the stony-

NO HEAD OFFICES

faced trio who, like Queen Victoria, were definitely "not amused".

We fought to stifle giggles and keep straight faces. As the doors closed and the lift continued its ascent, the occupants could not have failed to hear our hysterical laughter.

Messrs Castle and Holmes were generally perceived as hard cases – men to be feared and not known for their subtlety.

On the occasion that we received a derisory pay rise, we were given the glad tidings by individual letters stat-

in a nearby hostelry. We knew it was best to keep out of their way when they returned a few hours later. If you spoke to them in the afternoons they'd (figuratively, of course) bite your head off.

At the end of September 1962, I left the CIU and moved back to Hitchin to get married. Soon after handing in my notice I was told that Mr Castle and Mr Holmes wanted to see me. I knocked on the General Secretary's door with some trepidation and was invited in.



ing: "A vote of thanks will be passed to the management." In other words, no arguments, we order you to be grateful.

One day I said to Harry that a lot of money was being wasted by producing monthly pass cards when the demand was virtually zero. Harry told me to suggest it to Frank Castle whose terse response was: "Put it in writing and we'll put it to the finance committee." No "good idea", no "thanks", no pleasantries.

Mr Castle and Mr Holmes would regularly disappear for an early liquid lunch

He and J B Holmes could not have been more pleasant. Frank smiled, shook my hand, said I'd done an excellent job and that he was sincerely sorry I was leaving. Then he said: "If ever you come back to London there will always be a job waiting for you here. I give you my word."

Frank R Castle MBE and J B Holmes, you were a couple of unforgettable characters. I suspect that your barks were worse than your bites. And Frank, although you passed away in 1972 and I turned 70 last December, I may yet take you up on that offer. ●

NEXT year sees the 150th anniversary of the Union and the 50th anniversary of our move from Clerkenwell in east London to Club Union House in Islington.

NICK MURRAY (pictured left), now Assistant Secretary at Stopsley WMC in Luton, was working at Head Office at the time and remembers those days.

Hit the jackpot

Dransfields

LUCKY DIP

Club Lotteries

Fantastic Dranscash deals on all Pull Tab tickets

Customers love Pull Tab Lotteries, so Dransfields gives you the best – **Lucky Dip Club Lotteries. No licence, no rent, no VAT** – just big profits and great service from the UK's largest independent supplier of gaming machines.

- **Guaranteed rapid response service**
- **The best machines with regular upgrades**
- **Local engineers on call all year round**
- **Gaming machines, jukeboxes, lottery products, pool tables, multi-game quiz machines**



Dransfields
LOCAL SERVICE, NATIONAL STRENGTH

www.dransfields.com

Get onto a winner! - call 0845 094 1495

FREE COMPUTER AIDED DESIGN

BARS CARPETS FURNITURE



TELEPHONE: 020 8541 4471

FULL INTERIOR REFURBISHMENT





www.easeco.co.uk

47-51 Hawks Road, Kingston upon Thames, Surrey, KT1 3DS

contact@easeco.co.uk

club MANAGEMENT

IN ASSOCIATION WITH The co-operative bank

FORCING STAFF TO RETIRE AT 65 ENDS THIS MONTH

IF you plan to tell any of your club's staff that they need to retire they must be informed by the end of this month.

This is because the default retirement age of 65 is being phased out this year and from October 1 no one can be made to retire against their will. The last day employees can be compulsorily retired using the current procedure is September 30 – so the last day to provide the six months' notice required is March 30.

At present, all employers including clubs are required to write to staff not more than 12 months, but not less than six months, before their 65th birthday informing them that they are approaching retirement but they are allowed to request to work beyond this date.

Employers can still use the current procedure between March 30 and April 6, when the new law comes into force, but if they do so they must use the short notice provisions. This means an employee could claim compensation – up to a maximum of eight weeks' wages. From April 6 clubs will no longer be able to issue any notifications for compulsory retirement using this process.

From October 1 there will no longer be a default retirement age (DRA). If the club does want to use a retirement age this will have to be objectively justifiable. There will also be no statutory procedures for retirement in place from that date.

Benefits

The main argument for removing the DRA is allowing older people freedom of choice. Many older people enjoy their work and want to continue working beyond the state retirement age. Increasingly, older people are concerned about the potential financial difficulties of surviving on a pension and therefore want to continue working for financial reasons. A DRA of 65 years is an arbitrary bar without any reasoning behind it.

People are also living longer – and retiring at the age of 65 years leaves a long period of life without any work. As well as living longer, people are healthier and are physically able to work for longer than in the past. Life expectancy is currently increasing by more than two years per decade and this has a financial impact for the country. Quite simply, there is an eco-

nomical advantage to have older people working, rather than being supported solely by a pension.

Despite these arguments there has not been enthusiasm for the removal of the DRA from all groups. Employers'



Club Management is edited by Mick McGlasham

bodies, such as the CBI and the Institute of Directors have generally been negative, with their main concern being the removal of the flexibility that the DRA currently gives to employers.

The TUC has generally been positive, but has expressed concerns about the impact that this might have on older people in physically demanding jobs. It has also expressed concern about the planned increase of the age at which the state pension is paid.

Justifying a retirement age

It will still be possible for clubs to have a compulsory retirement age if it can be objectively justified. The Government's Business Department BIS (Department for Business, Information and Skills) gives the examples of air traffic controllers and police officers as professions where having a retirement age could be justifiable. These are called "employer-justified retirement ages" (EJRAs).

EMPLOYMENT LAW QUIZ

(Answers on Page 13) . . .

- How much compensation is there for a staff member who wins an age discrimination claim?
 - The maximum unfair dismissal compensation
 - Compensation is uncapped
- What is the last the last day club staff can be compulsorily retired?
 - April 30
 - March 30
- What would happen if the club gave notice to retire a staff member after March 30?
 - The staff member would retire normally six months later
 - Clubs must use the short notice provisions. This means an employee could claim compensation up to a maximum of eight

- weeks' wages. From April 6 clubs will no longer be able to issue any notifications for compulsory retirement using this process.
- Can the club justify a retirement age when the default retirement age is removed?
 - Yes
 - No – The employee who is near or over the present retirement age has the statutory right to work on for as long as he or she is able.
 - Can the club "retire" a staff member who has reached the age of 65 or over after October 1?
 - Yes
 - No

To have a compulsory retirement age a club would have to show that it has a "legitimate aim" and that the retirement is a "proportionate means of achieving that aim." It might be possible to demonstrate that the retirement age is a health and safety issue and you could try to argue, for instance, that it was not safe for a cellar man to go up and down steps in his 70s or that 80 was too old for a barmaid.

To use such an argument, however, a club will have to provide evidence to show that an older age is linked to health and safety issues, and that retirement is a proportionate means of addressing those issues.

To be classed as "a proportionate means of achieving that aim" it would need to be shown that:

- the actions of the employer are fulfilling an aim that the employer has defined
 - the actions are required because there is no reasonable alternative to achieving the aim
 - the benefits and importance of the legitimate aim significantly outweigh any discriminatory effect.
- A "legitimate aim" is one that relates to:

- health and safety
- the training requirements for the job
- the needs and efficiency of the business.

A cost saving alone would not be a legitimate aim (for example that an older worker has a higher salary than a younger worker and therefore there is a saving to the club if the older worker leaves).

Rather than having a compulsory retirement age clubs could decide retirements individually. However, the club will still have to show that any decision to retire someone is objectively justified. There will be more detail about this when the legislation is published.

If a club does want to retire someone it will have to follow a fair procedure under existing dismissal rules. For the dismissal to be fair there will have to be a potentially fair reason – one of the five reasons set out in the Employment Rights Act 1996 (capability, conduct, redundancy, statutory ban or some other substantial reason.

The co-operative bank
good with money

We're a hard act to follow when it comes to cash

Our **Business Current Account – Cash Tariff** offers one of the lowest cash depositing fees on the market* plus the convenience of paying in cash at the Post Office®.

We're top of the bill for all your cash needs.

To find out more
0800 0282 282
co-operativebank.co.uk/business ret: 39982



*Source: Business Moneyfacts February 2011 – based on depositing £3,000 a month at the Post Office®. The Co-operative Bank is authorised and regulated by the Financial Services Authority (No. 121885), subscribes to the Lending Code, is a member of the Financial Ombudsman Service and is licensed by the Office of Fair Trading (No. 096118). The Co-operative Bank p.l.c., P.O. Box 101, 1 Balloon Street, Manchester M60 4EP. Registered in England and Wales No. 0900207. Calls may be monitored or recorded for security and training purposes. For BT customers, calls to 0800 numbers are free. Call charges from other companies may vary and you may want to check this with your service provider.



"It is impossible to say whether this is a deliberate policy of HMRC or whether there is a genuine time lag between the two payments, my advice is to make sure and write the letter.

"HMRC are also rejecting claims that are not properly made. HMRC guidance details that a claim must be correctly made, in that where a taxpayer seeks repayment of VAT it must be specified in which VAT period the liability of HMRC to repay arises. Where claims are not quantified – if a club asks for repayment but does not

Practical actions

"HMRC appear to be taking a 'blanket approach' to all claims; if it's not quantified by period, reject it; if not appealed, reject it. A closer inspection of the facts, however, might identify that HMRC have failed to take the correct actions, or have made certain wrong assumptions.

"Have HMRC written previously to reject the claim because it wasn't validly made? On rejecting a validly made claim did HMRC detail in their rejection the options open to the taxpayer? In both instances if HMRC were "negligent" in their duties and responsi-

CLUBS' TAX BATTLE

specify the amount or if an amount is requested but not referenced to a VAT period – HMRC are rejecting them.

"Finally HMRC are throwing out claims where when they first rejected repayment it was not appealed to the Tax Tribunal. This doesn't seem fair at first as you might expect the taxman just to get things right. But, as a taxpayer you would not want the uncertainty of HMRC coming back to you after they'd agreed an assessment in your favour and the same applies to them when the boot's on the other foot.

bilities to the club, there is scope for requesting that HMRC revisit the claim and make the repayment."

Dealing with HMRC is not straightforward and full of pitfalls for the unwary. You should contact your Branch Secretary or an approved VAT expert such as Ian Spencer. (Contact details in accompanying advert).

● A second defeat for HMRC was reported in our November issue when the tax authorities confirmed that the income from automated lottery machines, known as Category B3A, was exempt from VAT. Full details can be found on the HMRC website reference Business Brief 2011 01.

Dransfields have a wide range of these VAT-free machines available for immediate delivery on risk-free deals and will be pleased to send a representative to attend your Branch or division meetings to explain how your clubs will benefit by avoiding paying 20 per cent VAT on machine takings.

Many clubs have experienced a drop in their gaming machine income as a direct result of members playing machines in licensed bookmakers instead of in their club. The B3A machine has a top prize and as such is the only category of machine available to clubs that matches the top prize of £500 paid out by bookmakers' machines.

Dransfields can be contacted on 0845 094 1601.

EMPLOYMENT LAW QUIZ ANSWERS

QUESTION 1: How much compensation is there for a staff member who wins an age discrimination claim?

Answer b) The most crucial aspect to remember about age discrimination compensation is that it is uncapped. There were 3,395 claims between April 2008 and April 2009 compared to 2,652 claims brought between April 2007 and April 2008, according to the ACAS 2008/09 annual report.

QUESTION 2: What is the last day club staff can be compulsorily retired?

Answer b) The last day employees can be compulsorily retired using the current procedure is September 30 – so the last day to provide the six months' notice required is March 30.

QUESTION 3: What would happen if the club gave notice to retire a staff member after March 30?

Answer b) Clubs can still use the current procedure between March 30 and April 6 when the new law comes into force, but if they do so they must use the short notice provisions. This means an employee could claim compensation – up to a maximum of eight weeks' wages. From April 6 clubs will no longer be able to issue any notifications for compulsory retirement using this process.

QUESTION 4: Can the club justify a retirement age when the default retirement age is removed?

Answer a) Yes – It will still be possible for clubs to have a compulsory retirement age if it can be objectively justified. The Government's Business Department BIS (Department for Business, Information and Skills) gives the examples of air traf-

fic controllers and police officers as professions where having a retirement age could be justifiable. These are called "employer-justified retirement ages" (EJRAs).

To have a compulsory retirement age a club would have to show that it has a "legitimate aim" and that the retirement is a "proportionate means of achieving that aim". For example, it might be possible to demonstrate that the retirement age is a health and safety issue. You could try to argue, for instance, that it was not safe for a cellar man or Steward to go up and down steps in his 70s or that 80 was too old for a barman or barmaid. To use such an argument, however, a club will have to provide evidence to show that an older age is linked to health and safety issues, and that retirement is a proportionate means of addressing those issues.

QUESTION 5: Are clubs able to "retire" a staff member after October 1 when the staff member is over 65?

Answer a) Yes. If a club does want to "retire" someone it will have to follow a fair procedure under existing dismissal rules. For the dismissal to be fair there will have to be a potentially fair reason – one of the five reasons set out in the Employment Rights Act 1996 (capability, conduct, redundancy, statutory ban or some other substantial reason).

* While every care has been taken in compiling these notes, the writer Andrew Dane cannot be held responsible for any errors or omissions; the notes are not intended to be a substitute for specific legal advice, which you should obtain from your Branch Office.

OBITUARIES

JACK HARVEY

MEOPHAM Country Club in Kent are sad to announce the death of their former Chairman and President Jack Harvey.

As we reported last month Jack had recently celebrated his 100th birthday. As well as being a talented billiards and snooker player, who still captained the club's team when he was 90, he also served on the Committee of the Gravesham snooker league for 40 years

Jack joined the club in 1946 and was Chairman from 1951 to 1976 then President until 1997. In honour of his 100th birthday the club staged a party at which Jack presented the Jack Harvey Snooker Pairs Trophy to its first winners Mark Pollard and Glen Winter from Pockets Snooker Club in Gravesend. Jack himself won the Snooker League Seniors competition at the age of 82, 40 years after being the town's billiards champion.

As well as being a talented organiser and snooker player he was the President and the captain of Meopham Cricket Club, which regards him as their finest post-war captain.

Jack's first wife Eida died in 1953 at the age of 42. He remarried and was widowed again in 2002 when his second wife Jean died at 86. Condolences go to his sons, Edward and Ken, his seven grandchildren and three great-grandchildren.

Paul Parrin, who organised Jack's 100th birthday party said: "He will be missed by all his family and friends. Characters like Jack are very rare."

JIMMY HANCOCK

IT is with regret that Belmont Club & Institute in Durham announce the death of Jimmy Hancock.

Jimmy served the club on the board of management for 16 years as a valued member of the Committee. He was also a regular attendee and contributor to the local Durham City division of the Branch.

Club Chairman Alan Robinson said: "I personally pay tribute to Jimmy for all the work and effort he gave to our club. He will be sorely missed by all and we send our condolences to his widow Diane and all the family."



IAN SPENCER & ASSOCIATES LIMITED

VAT CONSULTANT

Ensure you minimise risks and claim ALL your entitlement.

Can you claim retrospective windfalls?

e.g. VAT on gaming machines and other sources of income?

Are you entitled to recover all the VAT on Building Projects?

Do you need help with Dispute Negotiations with the VAT office?

To find out if you are eligible and for friendly professional advice contact:

IAN SPENCER

42 ST ANDREW'S ROAD, SHEFFIELD S11 9AL.

TEL: 0114 258 5967 MOB: 07904 864209

E-MAIL: ianspencer@vatproblemsolved.com

IAN SPENCER & ASSOCIATES LIMITED

GOING LOCO

THE Financial Services Authority (FSA) has recently prosecuted a number of clubs for non-submission of their annual returns.

The FSA is the governing body for all clubs and it is a requirement for clubs to send a completed annual return (including a copy of the accounts) to the FSA, when requested. The annual fee is then based upon the information included in the annual return.

The required documents must be submitted within seven months of a club's year end. The Union would stress that these documents must be submitted when requested by the FSA, or your club is liable for a hefty penalty fee.

Ipswich Locomotive Club recently lost a case against the FSA because although they had sent their documents to the required authorities they were unable to prove it when asked to produce back copies.

Treasurer DANIEL MURRAY gives his version of events . . .

WITH THE

A FABLE (because you wouldn't believe this could happen here) . . .

There once was this little local friendly club, run by volunteers for the local community. It played its bingo, it played its pool, and its members even played their snooker.

Then one day, the Robber Barons sent the little club a threatening letter; this letter said that the club had not filled in the Robbers' evil forms for nearly 10 years.

The little club tried to appease the Robbers, by completing their evil forms, but try as they might the Robbers would send back the forms for one reason then another.

The little club would try to speak to the Robbers, but the Robbers only wanted the evil forms completed – even though some of the little club's Committee members had died over the years!



With no warning the Robbers took the little club to court, they said that even though the little club had eventually sent in the forms for the last 10 years, they only wanted the last three.

The little club cried out "That's not fair, why ask for 10 years when you only wanted three". But the Robbers just said "Tough!"

Eventually, the little club found a solicitor who looked at the law, but the Queen had allowed this law to be written by the Robbers so it was in their favour.

So the little club, despite completing all of the evil forms (which had already been done in the first place), were still forced to pay £700 plus costs of about £650 – because they couldn't prove they had been sent in the first place.



PRIZE CROSSWORD

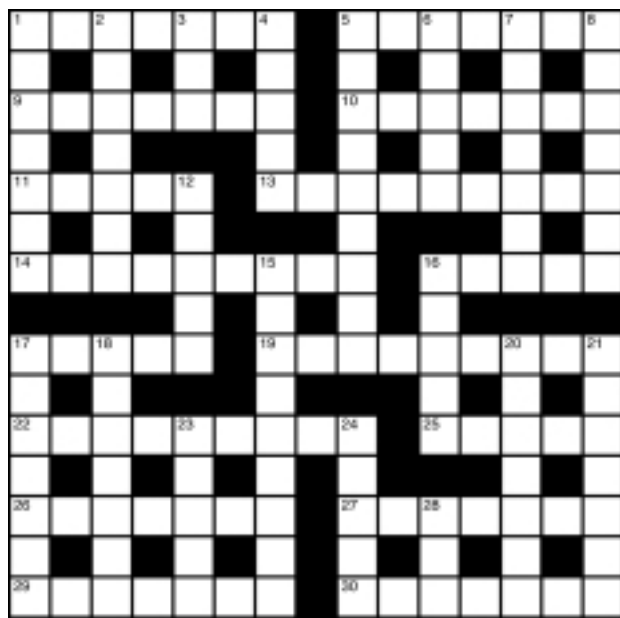
EVERY month we give five £10 prizes to a lucky five correct entrants.

ACROSS

- 1 Embed in claim to be a garden sort. (7)
- 5 Rip test to shreds for racing 'consultant'. (7)
- 9 Pagan Dr. sorts out elderly relative. (7)
- 10 Fit in with pro-partner's shape. (7)
- 11 Musical drama of a rope in knots. (5)
- 13 Toxin bred out of a situation that could easily flare up. (6-3)
- 14 Telling you in advance – it's out of order to hit copper. (9)
- 16 Apple adaptation has appeal. (5)
- 17 Men do cause trouble for evil one. (5)
- 19 Portion of vegetables? For them, more likely. (9)
- 22 It can supply caffeine for all. (6-3)
- 25 Forfeit it, not being made to volunteer. (5)
- 26 For darts – with which to shoot your mouth off? (7)
- 27 Go on too long, by managing too much? (7)
- 29 Pillagers – a sore lot, oddly. (7)
- 30 Seasonally warm, according to the recap. (7)

DOWN

- 1 Inner clique – where it's said to be situated. (2-5)
- 2 Pretend drug is able to locate second class blood group. . . . (7)
- 3 . . . To modify DNA, also. (3)
- 4 As tot develops, drink to him. (5)
- 5 Clinch tea deal – it's practically scientific! (9)
- 6 Small change from Stanley Spencer. (5)
- 7 Difficulty of middle eastern, Russian money. (7)



Name

Address

Club

- 8 How the music was treated to a second stir? (7)
- 12 Shaken look, like a chicken. (5)
- 15 Accessories – that pin you down? (9)
- 16 Paved area sees Patricia briefly joining Jupiter's moon. (5)
- 17 Sounds singularly level to an acoustic engineer. (7)
- 18 As American is to gangster, so crazy-foam is to zero. (7)
- 20 Impose, allegedly, the strength of new head? (7)
- 21 Dynasty – ran nylon-producing despotism. (7)
- 23 Bird spread would be flat out. (5)
- 24 Implements lost round-about middle of October. (5)
- 28 Tree in overwhelming surroundings. (3)

Send your entry to Crossword, Powdene Publicity, Unit 17, St Peter's Wharf, Newcastle upon Tyne NE6 1TZ, to reach us by March 31.

The moral of the story:

1. They can only prosecute up to three years, so if a letter comes in asking for five or six years' forms concentrate on the last three years. Do not delay by trying to complete the lot.
 2. Warning: they can prosecute up to £1,000 for every week you are late so don't be!
 3. If it is a single fine, pleading guilty will save a third off the tariff. A single fine can be up to £1,000 per offence.
 4. They will not negotiate; they will go to court irrespective of your efforts. So ring your Branch for legal advice as soon as possible.
 5. Unless you can prove you have sent in the documents, in other words you have proof of delivery or original copies, you will lose.
 6. Send the forms by recorded post, keep a copy and file at least three years' worth.
- PS. The little club's President says: "Doesn't it warm your hearts to know that the Robbers are warming their offices in London with your money."

Tighten up

CLUBS have been warned to tighten up their banking procedures after a steward pleaded guilty to stealing more than £4,000 from a North East club.

Durham Crown Court was told the club trusted the 49-year-old woman to take the club's takings to the bank on her own. But over six weeks she pocketed money for herself when she falsified paying-in slips and paid in less to the bank. She was given a six-month suspended prison sentence.

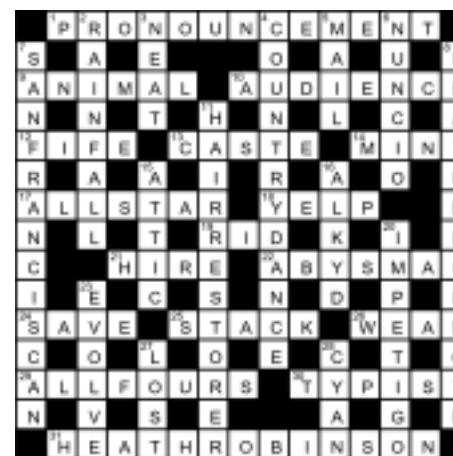
The Judge told her that clubs were important to communities and she had pushed it to the point of financial ruin. The club only survived when a Committee member lent them £4,000.

In a different case, in South Wales, a treasurer who tricked a co-signatory into signing blank cheques stole nearly £40,000 from the club and was jailed for 14 months.

CROSSWORD SOLUTION

Congratulations to the five winners of our £10 prize Crossword:

Phillip Beever of Underbank WMC, West Yorkshire; Burt Barber of Northampton WMC; John Carter of Darlington Club; Elsie Whitehouse of Alveley Social, Shropshire; and Greg Burt of Scraftoft Valley WMC, Leicester.



CLUB OUTINGS . . . CLUB OUTINGS

BLACKPOOL & LANCASHIRE

BLACKPOOL No. 1 WORKING MEN'S CLUB & INSTITUTE
Bloomfield Road, Blackpool
FY1 6JY. Tel: (01253) 343 508
(next to Blackpool FC Football ground).

Extends a warm welcome to all CIU associates and bona-fide guests.

★ **FREE ENTERTAINMENT** ★

7 nights throughout the summer season (weekends winter).
Change of artists nightly.
Coach parties welcome.

CONTACT THE SECRETARY IN WRITING

BLACKPOOL ROYAL BRITISH LEGION CLUB
33-38 King Street, Blackpool FY1 3EJ.

Enjoy your visit with us at the club. Good all-round entertainment. Bookings for coach parties accepted. Room available for hire.

Sec: Mr K Teasdale or Treasurer Mrs R Thomas
Club: (01253) 626 308; Office: (01253) 290 322
www.blackpoolrbl.co.uk
email: blackpoolbritishlegion@gmail.com

BLOOMFIELD CLUB & INSTITUTE
128 Bloomfield Road, Blackpool, FY1 6JW.
Bloomfield CIU welcome all Associate members and guests to enjoy top artistes in warm, friendly surroundings along with your favourite games – Bingo – Tote – Raffle seven nights a week. The club is on one level with disabled toilet facilities. Coach parties welcome. **Contact Secretary on (01253) 344 583. Fax: (01253) 349 402.**

Visiting Blackpool?
Try **BRUN GROVE WMC**
Brun Grove, Blackpool. Tel: (01253) 762 186
No admission charge to concert room.
No beer price increases for visitors.
BINGO – TOTE – RAFFLE
All associate members welcome.
Parties welcome.

BRUNSWICK WMC
BETHESDA ROAD, BLACKPOOL.
Telephone: (01253) 624 208
Coach parties welcome, also parking available. Entertainment 7 nights, comedians at weekends throughout the summer season. 2 large TV screens, cold food available. All branded doubles on offer. Smoking area at rear in beer garden. Wheelchair friendly. No beer increases for visitors. **Contact Billy Hill, Club Secretary.**

KNOTT END WORKING MEN'S CLUB
Offers a great welcome to CIU members and parties.
Why not try
● a visit to the seaside ● a ferry ride to Fleetwood
● a bowling green competition
or just our good food and entertainment.
SALISBURY AVENUE,
KNOTT END-ON-SEA, LANCS.
Office telephone (01253) 810362
Tel: Secretary Mr R Cummins for dates and details (01253) 812 226

The famous **LAYTON INSTITUTE**
Westcliffe Drive, Blackpool FY3 7HG.
Entertainment every weekend.
Summer show Tues-Sat, August 19-October 25.
Parties welcome. Ring in advance.
Bowling green for hire Saturdays.
Contact Secretary on (01253) 391 774 / 393 801
website: www.layton-institute.co.uk/

ROSEGROVE UNITY Working Men's Club
Holme Lodge, Rossendale Road, Burnley, Lancs, BB11 5DL.
Sited 2 minutes from Junction 9 on M65.
Large car parking space available.
Entertainment Friday, Saturday and Sunday.
Bookings must give 14 days' notice.
Contact Secretary on (01282) 453 203 or e-mail info@rosegroveunity.co.uk

BRIGHTON & SUSSEX

BRIGHTON TRADES LABOUR CLUB
Lewes Road and Elm Grove
www.btlc.ciu.org.uk

Live entertainment Saturday evenings.
Brighton Races, city and beach nearby.
Main bus route right outside the door.
Coaches welcome (please call first).
Tel/fax: Secretary (01273) 601 101
Email: admin@btlc.ciu.org.uk

Eastbourne & District Trade Union Club & Institute Ltd.
Clapham House, 48 Seaside, Eastbourne,
East Sussex BN22 7QL.

A warm welcome is guaranteed to all CIU associates and guests. A good selection of reasonably priced beers and spirits available. Temporary membership can be arranged at the door for all holiday makers. Large groups or coach parties are welcome with prior arrangements. Situated 5 minutes walk from the beach.
Please contact secretary on (01323) 727703.

EASTBOURNE WORKING MEN'S CLUB
102/104 Firle Road, Eastbourne BN22 8ET.
Tel: (01323) 723322

Email: eastbournewmc@googlemail.com
Visit the one and only workers' club in our lovely South Coast town. We have live music, raffles, bingo, darts, snooker and pool. See our Facebook page for coming events. A warm welcome to CIU members all year round.

LANCING & SOMPTING RBL CLUB
6 Colver Road, Lancing, West Sussex
BN15 9AX. Tel: (01903) 764 815

A warm welcome awaits all visitors. Facilities include Snooker, Pool, Darts, Crib and Sky TV. Catering for private parties can be arranged (14 days' notice please). Live entertainment every Saturday. Coach parties welcome for prior notice please contact the Secretary. Tel: Lancing & Dist. (01903) 753 127.

LITTLEHAMPTON TRADES & LABOUR CLUB
Wick Street, Wick, Littlehampton
BN17 7JH. Telephone (01903) 714 054

A warm welcome awaits all visitors. Facilities include darts, crib and Sky TV. Catering for private parties can be arranged (14 days' notice please). Live entertainment every Saturday. Coach parties welcome with prior notice, please contact the Secretary.

SEAFORD RBL CLUB
Claremont Road, Seaford, East Sussex BN25 2BQ.

Situated on A259, a warm friendly welcome awaits in this family-oriented club. Entertainment, darts, bingo, snooker and pool. Home-cooked food Wednesdays to Sundays. Phone for times. Temporary memberships available. Coach parties welcome. Please give 14 days' notice
Telephone: (01323) 890 154

ESSEX & EAST ANGLIA

HUNSTANTON (NORFOLK) UNITED SERVICES SOCIAL CLUB

A warm welcome to all visitors. Large enclosed garden and car park with sea views. Three snooker tables, also pool table and darts. Bingo Mondays and Thursdays and one game Saturday evening. Live weekend entertainment. Catering arranged on request. Disabled friendly. Close to Sandringham Royal Estate, Coaches welcome midweek.
Contact Club Steward on 01485 533360.

Naval & Military Club (Southend-on-Sea)
20 Royal Terrace, Southend SS1 1DU.
Tel: 01702 347169

A warm and friendly welcome awaits you. Large rear garden and roof terrace with fantastic views overlooking the seafront and estuary. Live entertainment Saturday nights and Wednesday afternoons. Hot and Cold Food available every day of the week. Local Real Ale Club of the Year. Coach parties welcome but must contact the Manager, Mr John Murray prior to the visit.

WALTON-ON-NAZE RBL CLUB
Vicarage Lane (off High Street). 01255 674 153
Visiting the seaside? A warm welcome and friendly atmosphere – two minutes from beach front.
Live entertainment at weekends – sing-a-long Thursday afternoons – large screen TVs – pool – darts. Good range of drinks and bar snacks available. New membership available – CIU and RBL affiliated.
Coach parties welcome! Contact Secretary

HAMPSHIRE & ISLE OF WIGHT

LINDFORD & DISTRICT WORKING MEN'S CLUB
Liphook Road, Lindford, Bordon, Hampshire
GU35 0PN. Telephone: (01420) 472 228
A warm welcome is extended to all Associate Members. Only stipulation is children under five years old must leave the club by 9pm. Just off the A325 road between Farnham and Petersfield. So why not call in on your way to and from the south coast. **Please give the Secretary 14 days' notice of party visits.**

NEWPORT (I.W.) SOCIAL CLUB
13-14 Lower St James Street, Newport, Isle of Wight PO30 5HB. Tel: (01983) 527 291
Sited in the centre of town, with a warm friendly atmosphere where you can bring family and friends. Open all day, function room, snooker room, darts, pool and jukebox. Bingo on Wednesday and Sunday evenings. Freshly-made rolls available daily. Coach parties always welcome by prior arrangement.

ROYAL BRITISH LEGION SOCIAL CLUB (COWES) LTD.
85 High Street, Cowes, Isle of Wight PO31 7AJ.
A warm and friendly welcome is extended to all visitors. Situated on the sea front with panoramic sea views from the stage dining area, the club has one of the best views in the country. Ideal for parties and outings. Freshly prepared meals available 7 days a week.
Coach parties very welcome, please notify Secretary or bar manager in advance. Entertainment Friday and Saturday evenings.
Tel: (01983) 292921 email: rblcowes@onwight.net

HEREFORD & WORCESTERSHIRE

HEREFORD WELSH SOCIAL CLUB
1 Hinton Road, Hereford, HR2 6BL.
Tel: (01432) 269038/285974.
Email:

herefordwelshclub@hotmail.co.uk
A friendly welcome is extended to all Associate Members. Live Entertainment every Saturday evening.
Hot and cold food available. Coaches welcome (please contact Secretary prior to your visit).
Please visit our website:
www.herefordwelshsocialclub.co.uk
"Hereford's most popular social club"

KENT

BEXLEYHEATH WMC
Royal Oak Road, Bexleyheath. DA6 7HG
Telephone (0208) 303 2163
Friendly atmosphere, comfortable surroundings and an excellent range of beers to quench your thirst. Everything you require on your visit to Bluewater and Lakeside shopping centres. Refreshments available. (Please give advance notice).

SOUTHBOROUGH MEN'S CLUB
Forge Road, Southborough, Tunbridge Wells TN4 0EX.
Tel: (01892) 529 304; Office: (01892) 523 832
A warm and friendly welcome is extended to all Associate members and guests. Ideal for parties and outings from the coast, we have frequent live entertainment on Saturdays, bingo on Wednesdays and Sundays. Sky TV, snooker and pool. Club open all day Friday, Saturday and Sunday. Coach parties and catering by arrangement.

SUNDRIDGE PARK WMC
134 BURNT ASH LANE, BROMLEY.
Tel: (020) 8464 3638 (Office); (020) 8460 6348 (Club)
Located close to A21 and A20. A warm welcome is extended to all visitors. Two bars serving a wide range of drinks. TV in bar and the lounge. Purpose-built snooker room with four tables. Live entertainment Saturday and Sunday evenings. Coach parties by prior arrangement with the office.

WAINSCOTT INSTITUTE (WMC)
4 Wainscott Road, Wainscott, Rochester, Kent ME2 4LB. Tel: (01634) 717 464
A warm welcome is extended to all CIU associates. Live music & bingo on a Saturday night. A range of facilities including snooker, pool & darts. We welcome coach parties by prior arrangement with the steward. Buffet refreshments can be arranged. We are close to all the motorways via the Medway towns. CHILDREN ARE WELCOME.

LEEDS & WEST YORKSHIRE

Visiting Blackpool or Yorkshire Coast?
Haydock Park or York Races?
Then call at:
ELLAND WORKING MEN'S CLUB
Roseberry Street, Elland, West Yorkshire.
For your breakfast on the outward journey. And for an evening's splendid entertainment on your way home. We are only 2 miles from Junction 24, M62 on the A629. A warm welcome extended to all Associate Members. Live entertainment on Saturday and Sunday evenings. Dancing on Thursdays to our resident organist. Fully modernised Concert Room and Lounge. Excellent Games Room. Floodlit Bowling Green. Large Car Park.
Coach Parties welcome – please let us have 14 days' notice in writing to the Secretary Phil Holroyd. Tel: Club (01422) 373 023. www.wmcelland.co.uk
Telephone pre-bookings to be confirmed in writing to the Secretary.

SWARCLIFFE WORKING MEN'S CLUB
Swarcliffe Avenue, Leeds LS14 5DE
A warm and friendly welcome always assured in the comfortable surroundings of our recently refurbished club. Live entertainment every Friday, Saturday and Sunday evening. Relax in the quiet of the lounge or try a game of snooker on one of our three superb tables. Big screen Sky Sports TV.
Planning a day at the races?
York, Wetherby, Ripon.
We are 2 minutes from the A64 and 5 minutes from the M1. Breakfast and evening meals for large parties available by appointment.
Contact: Glen Doyle (Secretary) 0113 2959100

BELLE ISLE WMC
Belle Isle Road, Leeds LS10 3PE.
Warm and friendly club with large car park, good value beer and large concert room. Live bands Friday, Saturday and Sunday. Coaches welcome.
Contact Secretary on (0113) 2718 768.

CLUB JOURNAL

Official Journal of the
Club & Institute Union
Officially audited
circulation figure 26,254
EDITOR: Mick McGlasham
253-254 Upper Street, LONDON N1 1RY.
Telephone: 020 7226 0221
Fax: 020 7354 1847
email: information@wmciu.org
website: www.wmciu.org.uk
Personal subscriptions: £7.00 per year
ADVERTISING:
Geraldine Oliver or Mike Lyon
Powdene Publicity, Unit 17,
St Peter's Wharf, NEWCASTLE NE6 1TZ.
Telephone: 0191 265 0040
Fax: 0191 275 2609
email: cj@powdene.com
If you have an item of news for Club Journal contact Chris Brewis at Powdene Publicity on 0191 265 0040.

LEICESTER & EAST MIDLANDS

NEW PARK SOCIAL CLUB & INSTITUTE LIMITED

Battersbee Road, Leicester LE3 9LD
All coach parties welcome, with 14 days' notice to the secretary. Fully air conditioned large concert room. Hot and Cold Food available. Sky TV shown on big screen in the games room. Children allowed Friday and Saturday nights. If you have any questions please contact the secretary on Telephone (0116) 2333 305 or Fax (0116) 2333 303.

NOTTINGHAM ODDFELLOWS CLUB

89 HUMBERSTONE GATE, LEICESTER.
TELEPHONE: (0116) 262 0181
262 5404 (EVENINGS) – CIU AFFILIATED
★ City Centre Club
★ Coach park right outside premises
★ 2 minutes from centre of Leicester
Coach parties and parties always welcome.
Food supplied hot or cold – 7 days' notice or please phone prior to visit. Children welcome. Dances Monday, Tuesday and Friday. Entertainment available.
Phone or write to Secretary Eric Johnson

SAFFRON LANE ESTATE WMC

429 SAFFRON LANE, LEICESTER, LE2 6UF
Welcomes all CIU members to our friendly club here in Leicester. Only 5 minutes from the M1 junction 21 and close to the racecourse and the football, rugby and cricket stadiums.
Clean, comfortable and fully air-conditioned. Please visit our website where you will find details of all our facilities and activities.
www.saffronlanewmc.co.uk

SKEGNESS EX-SERVICE CLUB

2 Grand Parade, Skegness, PE25 2UN.
Telephone: 01754 762113
Located on the seaford near the clocktower, 2-3 mins from town centre. Lounge bar, pool/children's room, 1st floor patio area. Reasonably priced beers/lagers and house doubles. Selection of chilled baps. Live entertainment every Saturday (Sundays main season). Open 11.30-6.00 and 7-11.30 most days. Pre-booked coaches welcome – come to a completely refurbished 21st century club.

SKEGNESS WMC

Briar Way, Skegness, Lincolnshire PE 25 3NR
Telephone: (01754) 762 598
A warm and friendly welcome is extended to all CIU associate members visiting the area. We are centrally located in the town 5 minutes from the bus and railway stations (opposite the market). We offer facilities including a concert room, games room and a special families room. Our resident organist will entertain you in the lounge. After the Spring Bank Holiday we will also have various visiting artistes. Coach parties are welcome by appointment.

LONDON

DONE OUR BIT EX-SERVICEMEN'S CLUB

128A MAYGROVE ROAD, LONDON NW6.
Office: (020) 7624 3701; Club: (020) 7624 3603
Coach Parties welcome by appointment with the Secretary. Entertainment Friday, Saturday and Sunday. Food by arrangement. 15 minutes from Wembley Stadium. 10 minutes from West End.
No children under 16 on Saturday.

THE HAMMERSMITH CLUB

Rutland Grove, London W6 9DH
10 mins' walk from Fulham FC and less than 25 mins by local transport to Chelsea and QPR. A warm and friendly welcome to away fans looking for good hospitality and a relaxing drink.
Also 20 mins to Westfield, Europe's largest shopping centre and 30 mins to West End theatres.
Contact us on (020) 8748 5760 or visit www.hammersmithclub.co.uk

HARROW ROYAL BRITISH LEGION

Northolt Road, South Harrow HA2 0DW.
Extends a warm welcome to all Associate members and guests. Situated 10 minutes from the A40 and 20 minutes from Wembley Stadium. We have live bands every Saturday and Sunday night. Catering on request. Coach parties welcome with prior notification to Kath or Roy Roberts. **Telephone: (020) 8422 1222.**

HAYES WMC

Pump Lane, Hayes, Middlesex UB3 3NB.
Telephone: (020) 8573 1721
e-mail: bobdaybell@aol.com

Why not visit the flagship of clubs in the South? Ascot, Kempton Park & Sandown racecourses all nearby. Live bands every Friday and Saturday night. Late night cabaret last Saturday of every month, at least 3 acts, charge for entry, late bar. Catering available weekends, orders taken in advance to your requirements.

Visit our website:
www.hayesworkingmensclub.com for our full entertainment programme. Coaches welcome by prior arrangement with the secretary.

ISLEWORTH CLUB

Goodenough House, 109 St John's Road, Isleworth, Middlesex TW7 6PN. Telephone: (020) 8560 2569
We are good enough – are you?
5 minutes from Twickenham Rugby and only 15 minutes from Kempton and Sandown. Call in on your way and give us a try. **Pick your winners** from our varied selection of popular beers which are available in either our large Concert Room or Lounge. Close to the M4 and M3. Please give prior notice for parties. Coach parties are welcome.

Wealdstone Social Club

Railway Approach, Harrow, HA3 5BX.
Tel: (020) 8427 3334
email: secretarywsc@btconnect.com
For 15 min connection to **WEMBLEY STADIUM.** Coach parties welcome. Free parking all day. Please arrange with Secretary for bookings. Function Hall available for private parties.
Friendly staff – great beer – good company

MANCHESTER & CHESHIRE

The Lower Kersal Social Club

Stamford Road, Salford M7 3SD.
Telephone/fax: (0161) 792 4717.
An ideal family atmosphere club located 5 minutes from M62 and 10 minutes from MUFC – great for pre-match refreshments. We offer facilities for Charity Concerts, Conferences and Sportsman Dinners.
Contact Secretary for availability and bookings.

NORTHAMPTONSHIRE & CAMBRIDGESHIRE

St James Working Mens Club

Weedon Road, St James, Northampton.
A warm welcome awaits all club members. Lounge, Games Room and large Concert Room. Parties welcome, catering if required by prior arrangement. 5 minutes M1, Junction 15A.
Please contact Secretary Mrs P. Webster.
Tel: (01604) 456 602 www.stjameswmc.co.uk

SHEFFIELD & SOUTH YORKSHIRE

ARMTHORPE CORONATION CLUB

Tranmoor Lane, Armthorpe, Doncaster DN3 3BS.
Handy for racecourse and Doncaster Rovers. Close to M18. Big screen TV, entertainment every weekend.
Ring Club Secretary Alan Jones on (01302) 831 393

ARUNDEL EX-SERVICEMEN'S CLUB

CITY ROAD, SHEFFIELD
A friendly Club close to Town Centre
Facilities include a 500 seat Concert Room, two other lounges and a Games Room. Great Cabaret every night except Tuesday and Wednesday. Coach parties please contact Mr B. Simmonite. Children allowed up to 10 years. Catering for Buffet if required.
Telephone: (0114) 239 7151

CARCROFT VILLAGE WMC

Chestnut Avenue Carcroft, Doncaster DN6 8AG
Extends a warm welcome to all CIU affiliated members. Coach Parties welcomed by prior arrangement. 1 mile from A1 and close to M1, M18 and M62. Top class entertainment every weekend. Handy for Doncaster Races and trips returning from North or South coastal routes. Big Screen Sky TV and premier football. **All enquiries to John Oldroyd, Secretary on (01302) 725 497.**
www.carcroftvillagewmc.org.uk

HAWTHORN RECREATIONAL & SOCIAL CLUB

Goodison Boulevard, Cantley, Doncaster. Tel: (01302) 536 565
Easily accessible for the Racecourse. Big screen Sky TV. Artistes on Saturdays.

INTAKE SOCIAL CLUB

Craithie Road, Doncaster DN2 5EG.
We are the closest club (5 minutes' walk) to Doncaster Racecourse. (See Page 19 for offers). Bar snacks available. Tremendous value-for-money bar prices.
Contact Secretary Tom Forester in advance on: (01302) 320 036

SKELLOW GRANGE WMC

Skellow Road, Skellow, Doncaster DN6 8JL.
Tel: (01302) 722 567 www.skellowgrange.com
(Secretary: N. Harris)
It's 1/2 mile from A1M motorway links gaining access from M62, M18, M1. Completely renovated club, top class entertainment at weekends and top class money tombola through the week. Bus parties welcome, ample parking space. Handy for Doncaster Races or call back from the coast.
– All associates of CIU and guests welcome –

THE WESTMINSTER RECREATIONAL CLUB

Westminster Crescent, Intake, Doncaster DN2 6HU
Situated just off Leger Way (approximately 1/2 mile from main Race Stands). Coach parties welcome. Large car parking area. Artistes Friday/Saturday night.
Telephone (01302) 812 103/4

SURREY

CHERTSEY SOCIAL CLUB

Pycroft Road, Chertsey. 5 minutes M25 J11.
Country Club 1st Monday monthly; Line Dancing Wednesday; Bingo Thursday, Saturday and (fun) Tuesday afternoons. Live music Saturday; some Fridays. Thorpe Park 5 minutes; handy for Epsom, Ascot, Sandown, Kempton Park, Windsor Castle/racecourse and Chessington. Coaches and buffet/hot snacks by prior arrangement.
Tel: (01932) 563 265.

EGHAM UNITED SERVICES CLUB

111 Spring Rise, Egham, Surrey TW20 9PE.
"North Surrey CAMRA Club of the Year 2008 & 2009"
"Finalist for CAMRA Club of the Year 2009"
Located 5 minutes from J13 M25, handy for Windsor Castle and races, Kempton, Ascot, Epsom and Sandown. 5 mins from Egham Station on the Waterloo to Reading line. Three real ale and cider festivals a year.
www.eusc.co.uk
Tel: (01784) 435120 or 07738 714572
(Real Ale Festivals and Party Bars also arranged)

DAY OUT RACING

ESHES W.M.C.
142 Esher High Street, Esher, Surrey.
Telephone: (01372) 467 758
Sandown Race Course within walking distance. Kempton Park and Epsom also nearby. A warm welcome is extended to all associate members.

WALTON COMRADES CLUB

7 Franklyn Road, Walton-on-Thames, Surrey.
A warm welcome is extended to all affiliated members. Near to Hampton Court Palace, Kempton, Sandown and Epsom Racecourses. Within easy reach of Thorpe Park, Windsor Castle and Chessington World of Adventure. Easy access M25. Live music Saturdays. We are open all day every day.
Coach parties welcome. Apply to Club (01932) 226 052.

WALTON WORKING MEN'S CLUB

21A CHURCH STREET, WALTON-ON-THAMES, SURREY KT12 2QP.
Extends a warm welcome to Associate Members. Near M25/M3, Sandown and Kempton Racecourses, Hampton Court, Wentworth, Twickenham Rugby and Thorpe Park. Ideal fishing – River Thames. Dancing to live music Saturdays/Sundays. Coaches. In writing to the Secretary.
Telephone: (01932) 220 361.

THAMES VALLEY

Banbury Trades & Labour Club

32 West Bar Street, Banbury, Oxon OX16 9RR. Tel: (01295) 215 7119 (H); (01295) 254 168 (Club).
A warm welcome is extended to all Associates. Coach parties welcome with 14 days prior notice to Secretary. Live entertainment on Saturday night. Food available. Please contact Secretary with your booking.

PANGBOURNE WORKING MEN'S CLUB

Whitchurch Road, Pangbourne, Reading, Berks, RG8 7BS.
Pangbourne WMC is a family-oriented club in a picturesque Berkshire village, 200 yards from the River Thames. We offer Saturday night entertainment, quiz and crib nights, darts, snooker, pool, and a hall with a dance floor and separate bar. Bar food available by prior arrangement. Ample car parking. Coach parties welcome by appointment.
Telephone: (0118) 984 2885

WALES

BETTWS SOCIAL CLUB

Lambourne Way, Bettws, Newport, Gwent.
A warm friendly welcome assured to all CIU affiliated members and guests.
Less than 10 minutes from junction 26 of the M4. Coach parties welcome by prior appointment. Live entertainment every Saturday evening. Catering can be provided by arrangement. **Tel: (01633) 858 780.**

CARDIFF WEST END SOCIAL CLUB

COWBRIDGE ROAD WEST, ELY, CARDIFF CF5 5BY.
A very friendly welcome to CIU Associates and their families from CARDIFF'S PREMIER SOCIAL CLUB.
10 minutes from M4.
15 minutes to city centre.
Millennium Stadium,
Cardiff International Arena, St. David's Hall
Centre, Cardiff Bay.
Live entertainment every Saturday Night with Bingo/Raffle/Tote/Disco
FULL SKY SPORTS/RACING UK
Hot and cold food available.
COACH PARTIES MOST WELCOME.
Telephone: (029) 20594004

Although the CIU has taken care to ensure that all advertisements are placed in good faith it accepts no liability for any advertisements in Club Journal.

To advertise ring Chris Brewis on (0191) 265 0040.

March The Club & Institute Journal

LLANHARRY WMC & INSTITUTION LTD.
 Elm Road, Llanharry, Pontyclun,
 Mid-Glamorgan CF72 9HR.
 Extends a warm welcome to all CIU associate members and guests. Coach parties welcome by arrangement. Entertainment every Saturday. Restaurant facilities available. 10 minutes from junction 34 M4 motorway.
Telephone (01443) 222 217
Fax/Telephone (01443) 224 322

TONYREFAIL WORKING MEN'S CLUB
 28 WAUNRHYDD ROAD,
 TONYREFAIL, MID-GLAMORGAN.
 (15 minutes from M4, Junction 34)
 Extend a friendly welcome to all CIU affiliated club members and bona-fide guests. Dance hall seats 300. Modern lounge and games room. Full restaurant facilities available. Top class artists every Saturday and Sunday.
Telephone: (01443) 670 484.
Secretary: (01443) 670 601.
Why not park your rear end down!

WARWICKSHIRE & COVENTRY

BEDWORTH
EX-SERVICEMEN'S SOCIAL CLUB & INSTITUTE
 Rye Piece, Bedworth, Nr. Nuneaton,
 Warwickshire. Tel: (024) 7631 3236
 Extends a warm welcome to all associates. Restaurant facilities Monday to Saturday - Bar snacks also available. 6 minutes from junction 3 of M6. Approx. 5 miles to Coventry City. Saturday/Sunday night entertainment, live music, bingo, bar and lounge. Contact Secretary for bookings.

HEN LANE SOCIAL CLUB
 Beacon Road, Holbrooks, Coventry CV6 4DS.
 5 minutes from M6 Junction 3, 10 minutes' walk from Ricoh Arena, minibus from club on match days. Excellent function room and facilities. Hot and cold snacks available at all times. Prior notice required for coach parties and catering (menu sent on request).
Please contact the Secretary.
Tel: (024) 7672 4830; Office: (024) 7672 4832.

UNICORN SOCIAL CLUB
 Holbrook Lane, Coventry CV6 4DE. (5 mins from M6 J3).
 Just 15 minutes' walk from the Ricoh Arena, home of Coventry City Football Club. Excellent function room and facilities including games room and bar with large screen satellite TV. Modern air-conditioned facility with live music every Saturday evening and hot and cold food available. Prior notice required for coach parties, including official supporters' clubs.
Please contact the Secretary at:
unicorncoventry@yahoo.com
or by telephone on (024)76 684741

WILLENHALL SOCIAL CLUB
 ROBIN HOOD ROAD, COVENTRY
 CV3 3BB. **Secretary: (024) 7630 1222 or 7630 3278.**
Welcome to all Associate Members.
 Entertainment every Saturday and Sunday night in concert room (seats 600). Bar, games room and luxury lounge facilities. Large car park. Hot and cold snacks available. 10 minutes from City Centre. No Children Allowed.
Coach parties apply to Secretary.

WEST COUNTRY

GOING TO CHELTENHAM RACES?
 Why not call at:
CHARLTON KINGS CLUB
 21 Church Street, Charlton Kings,
 Cheltenham GL53 8AP.
Telephone: (01242) 525 511
 Easily accessible for the Racecourse. Coach parties welcome by arrangement. Open all weekend. Big screen Sky. Live music.

FILTON & DISTRICT SOCIAL CLUB
 Conygre Grove, Filton, Bristol BS34 7HZ.
 Extends a warm welcome to CIU members and guests. Coach parties by arrangement. Entertainment every Saturday, bingo on Sundays. Buffets arranged. 10 minutes from M5/M4.
Telephone: (0117) 969 2934

The Cabbage Patch Club
LAWRENCE WESTON SOCIAL CLUB
 Lawrence Weston Road, Bristol BS11 0ST.
 Extends a warm West Country welcome to those travelling to holiday destinations. 3 mins from Junction 18 M5. 10 minutes M4. Coach parties by arrangement.
Ring (0117) 982 9148

POOLE LABOUR CLUB
 22 Wimborne Road, Poole, Dorset
Tel: 01202 674 059 / 686 256
 Offers the 3 S's to all affiliated members, Sea, Sand and Speedway!
 Centre of Poole, 20 minutes from Bournemouth, 2 minutes from Poole Stadium for Speedway and Greyhound Racing. Good beer, warm welcome, open all day. Entertainment on Saturday nights, Tuesday Tea Dances. Darts, Skittles, Snooker, Pool and Dominoes games can be arranged. Certain restrictions apply to children. Contact Secretary for details.

WESTON-SUPER-MARE WMC
 Orchard Street, Weston-super-Mare.
Telephone: 01934 418 202
 A warm welcome is extended to Associates and their families in Weston's premier club. Situated in the town centre and close to the sea front. Live entertainment every Saturday and Sunday. Bingo (Friday Saturday and Sunday). Buffets arranged.
 Large downstairs concert room seating 250. Coach parties welcome including a Saturday.
Please contact the Secretary giving prior notice of visit. Open all day.

WEYMOUTH WMC
 MITCHELL STREET, WEYMOUTH,
 (Harbour End Of Town)
 Less than 5 minutes from the beach!
 We welcome all CIU affiliated members. Music Friday & Saturday evenings, with Bingo fliers on these nights. Plus the usual club activities. Restaurant now open.
Tel: (01305) 786 392 or (01305) 787254
www.weymouthworkies.co.uk

WIDCOMBE SOCIAL CLUB
 Widcombe Hill, Bath BA2 6AA. Tel: (01225) 425076
www.widcombesocialclub.co.uk
 Large friendly club, 5 mins walk from city centre. Darts, skittles, snooker, dance floor, lakeside terrace, entertainment. Food including our famous Sunday roasts. Associates warmly welcome. Child friendly. Coaches by appointment. Catering available. Easy access from M4.
 After a day at Bath Races or a fabulous shopping trip, come and relax at Bath's hidden gem.

Passing through the Cotswolds? Then why not visit
WOTTON HALL CLUB LTD.
 138 BARNWOOD ROAD, GLOUCESTER
 - We welcome all Associate Members -
 Bar, Lounge, Ballroom and Games Room. Dancing every Saturday. Restaurant facilities and basket meals available. 14 days' notice required.
Telephone: Secretary (01452) 610 025
 9.00 am-1.00 pm Monday-Friday

WEST MIDLANDS & BIRMINGHAM

WEST MIDLANDS & BIRMINGHAM

ALVECHURCH SPORTS & SOCIAL CLUB
 The Square, Alvechurch,
 Near Birmingham B48 7LD.
 A friendly welcome to all Associate Members. Weekend entertainment and comfortable surroundings, also food available. Close to M42 and M5 in a picturesque part of the countryside.
Contact: A. Morrison, Secretary on (0121) 445 2121.
Large parties please notify 14 days in advance.

REMEMBRANCE CLUB LTD.
 10 CHESTER ROAD, CASTLE BROMWICH,
 BIRMINGHAM B36 9DD
 Extends a warm welcome to all Associate Members. Live entertainment every Saturday and Sunday evening. Line Dancing Mondays. Ballroom Dancing Tuesdays. Large comfortable lounge. Games Room. Sky TV. Ample parking. Close to M6/M42 (nr. Spaghetti Junction). Coaches by arrangement. Contact the Secretary. (0121) 747 5256 / 747 2943

YARDLEY WOOD SOCIAL CLUB
 118 School Road, Yardley Wood,
 Birmingham B14 4JR.
Club Tel: (0121) 474 2026 Sec: (0121) 474 3725
 Visit our brand new website:
http://www.yardleywoodsocialclub.com/
 Two large TV screens, 6 snooker tables, bingo and weekly entertainment, bowling green. Function rooms available for hire and catering. Large car park at rear of the club. Associate members welcome.

YORKS (N & E) & NORTH EAST

BEECHWOOD, EASTERSIDE & DISTRICT SOCIAL CLUB
 Broadwell Road, Easterside,
 Middlesbrough TS4 3PP.
 (Opposite The James Cook University Hospital)
 Live music every night with bingo, totes and raffles. Large bar with 4 snooker and 2 pool tables, 2 dart boards and all Sky sports channels. Two smoking areas with heated Beach Huts. Coach parties welcome with prior notice to The Secretary.
Tel: (01642) 318789. Check the website it's all on there, www.beadsclub.co.uk

BLAKELAW & DISTRICT SOCIAL CLUB
 6 Cragston Way, Newcastle NE5 3SW.
 Friendly club on northern edge of Newcastle. Handy for A1, Racecourse and St James' Park. Coach parties welcome. Food can also be arranged.
Contact Secretary Alan Campbell on 07986706354 or blakelawsc@googlemail.com

CENTRAL WMC
 7 Beaumont Street, Darlington
Tel: (01325) 464054
 Situated near town centre, five minutes from A1(M). Associate members and coach parties are welcome as are football and racing followers. Please give prior notice.
 Live entertainment and catering by private arrangement. Room available for birthdays, engagement parties, wakes and weddings.

CITY OF YORK TRAMWAYS EMPLOYEES' CLUB AND INSTITUTE
 1 Mill Street (off Piccadilly), York YO1 1PY.
Telephone: (01904) 623 953
 5 minutes from Marks & Spencer
 Entertainment and dancing every night except on Wed and Thurs. Prize games. Concert room (seating 275), Games Room, Bar and TV Lounge. Visiting Associates are welcome. Parties by arrangement.
Telephone: (01904) 623 953.

King Street Social Club
 Phoenix House, 27 King Street,
 North Shields NE30 1BZ.
Telephone: (0191) 2900473.
 Situated on the main road from North Shields to the coast. Main bingo sessions are Tuesday and Friday evenings and Sunday morning.
 Top class live entertainment every weekend supported by resident band "Soul Machine".
 Coach parties welcome with prior notification to the Secretary David Farrell. **Telephone (0191) 2900474.**

Middlesbrough RAOB Club (The Buffs)
 51 Wilton Street, Southfield Road, Town Centre
 A19-A66 2 minutes. Redcar races, 10 minutes. Middlesbrough FC 5 minutes. Games Room, TV Lounge and Lounge. Live entertainment Saturday and Sunday. Disco's Wednesday and Friday. 50/50 Dancing Tuesday and Thursday. A warm welcome to all affiliated members including coach parties with prior notice to the Secretary. **Telephone: (01642) 860 511.**

NEW YORK CLUB & INSTITUTE LIMITED
 22-26 Blossom Street, York YO24 1AJ.
Tel: (01904) 612 244 newyorkclub@btconnect.com
Secretary: Frank A. Healy BA HND CMD
 300 yards from station on way to racecourse. Warm and friendly welcome to all Associate Members and guests. A great place to call into before or after your visit to York. Beer garden and 42" screen with Sky TV. Parties and buffet-style catering by prior arrangement.

NORTH BIDDICK SOCIAL CLUB
 BONEMILL LANE, FATFIELD,
 WASHINGTON NE38 8AN.
 Excellent riverside location. Five minutes from A1(M) with excellent car/coach parking facilities. Games room with 2 snooker tables and 2 pool tables. Restaurant facilities and buffets catered for. Why not call on your way to see football games or cricket games in the area? Coaches welcome by prior arrangement with Secretary Michael Normile on (0191) 416 0148. Why not visit our website at **www.northbiddickclub.co.uk**

OSBORNE WMC
 Osborne Road, Chester-le-Street,
 County Durham DH3 3DS.
 200 yards from the station and short walk to the Riverside Cricket Ground. Evening car and coach parking facilities. Live entertainment every Saturday night. A great place to call in after your day at the races. Bingo Mondays and Fridays.
Just give us a ring on (0191) 388 8679.

RELTON TERRACE WMC
 1 Red Rose Terrace,
 Chester-le-Street DH3 3LN.
 Five minutes' walk to Durham County Cricket ground and riverside park. Eight miles from both Sunderland AFC and Newcastle United. Away fans welcome.
Contact club on (0191) 388 3477
 for more information.

RICHMOND COMRADES CLUB
 Newbiggin, Richmond, N. Yorkshire DL10 4DT.
 Beautifully located club near to castle, Market Place and buses. Good parking/access for coach trips. 2 large function rooms and 2 bars, pool tables. Very large TV screen. Why not come and visit Richmond with your family. Ideal club for trip to Richmond or the races. ALL very welcome.
www.richmond.org
Tel: 01748822386 - Nikki Club Steward

ST CLEMENTS WMC
 Count de Burgh Terrace,
 South Bank, York YO23 1HH.
 Small friendly club. Five minutes from York Racecourse. Artists every Saturday night. Regular and guest real ales. Coach parties and catering by arrangement.
Telephone: (01904) 629973

More than 100 CIU Clubs inform members of their existence through our Club Outings Guide for as little as £20 per month. Join them in the next issue by contacting Chris Brewis on (0191) 265 0040.

CLASSIFIED ADVERTISING *on (0191) 265 0040*

Contact the Club Journal Advertising Manager

Although the CIU has taken care to ensure that all advertisements are placed in good faith it accepts no liability for any advertisements in Club Journal.

C&D Building Services

UPVC Roof Facia

Insurance Work Undertaken

Extensions Alterations & Improvement

Roofing Free Estimates

Mobile: 07958 487114 07803 923960

SPEEDCLEAN
THE ULTIMATE WAREWASHING RANGE *and ice makers*

Heavy duty DISH & GLASSWASHING MACHINES offering unrivalled standards in speed, efficiency, reliability and durability.

FEATURES INCLUDE:

- built-in water softener
- 45 second wash cycle
- energy-saving insulated panels
- automatic detergent and rinse-aid dispensers

finance options to suit - full guarantee - nationwide service support

NELSON 0800 592 833
WWW.NELSONWASH.COM

STEWARD / STEWARDESS
with partner required for **Lymington Royal British Legion Club**
Sited in the New Forest.
2-bedroom flat supplied with views of the Isle of Wight.
Salary negotiable. Please send full CV to:
The Secretary
The Royal British Legion Club,
22a High Street, Lymington,
Hants, SO41 9AD.

PSI
Prestige Security Installations Ltd

- Access Control
- CCTV
- Automatic Door Openers
- Car Park Barriers
- Membership Software

We can also Supply:

- Maintenance/Repairs
- Additional Fobs/Cards
- Additional Equipment

Approved installers of **ABLOY** **PROGENY**

for enquires please call **0800 917 4277**

www.psi-solutions.co.uk

Style Seating *UK Manufactured Furniture*

- Fluted aluminium frame
- Moulded seat foam
- Light weight
- 10 different fabric choices
- 5 different frame colours
- No visible fixings
- FREE DELIVERY**
- UK manufactured
- 5 year structural warranty
- Tested to BS EN 15373:2007 (test Level 3 - Severe Use)

Call for FREE 48 page brochure **tel: 01945 580099**

View our vast range online www.styleseating.co.uk

HALF PRICE DEAL AT

doncaster
racecourse

THE LINCOLN



THE FLAT IS BACK! The traditional William Hill Lincoln handicap at Doncaster Racecourse once again heralds the start of the eagerly awaited Flat Racing Season. **Saturday 2nd & Sunday 3rd April 2011.**

To add to the excitement of the racing, Doncaster Racecourse offers fantastic value for money. CIU Racing Club Members can now take advantage of an exclusive **massive 50% discount** on Grandstand admission on selected race days throughout the year*.

And, we're pleased to announce that you can now also use your CIU Racing Club Members Special Offer of 50% off Grandstand Admission during the **St. Leger Festival** on Wednesday 7th & Friday 9th September 2011.



Winner of the William Hill Lincoln at Doncaster in 2010.

TO BOOK, CALL OUR FRIENDLY TEAM ON 01302 304200

CIU members can take advantage of the half price deal to see The William Hill Lincoln for only £8.50 in the Grandstand. And, why not upgrade & save? Treat yourself to the Winter Warmer or Summer Cooler packages available throughout the year.

Visit www.doncaster-racecourse.co.uk for more great deals for CIU members and Club Journal readers.

Don't forget, there's even more to Doncaster Racecourse. In addition to 34 race meetings throughout the year, there's also a range of themed race days and live outdoor music concerts featuring chart-topping artists. If you would like to receive the latest offers direct to your inbox, go online and register with your email address.

To make your booking call 01302 304200

FREE RACEDAY FOR EVERYONE*: FRIDAY 29TH APRIL 2011
THE ROYAL WEDDING BANK HOLIDAY. SEE WEBSITE FOR DETAILS. Terms and conditions apply. See website for full details.

For a full list of 2011 racing fixtures and more, visit: **www.doncaster-racecourse.co.uk**

*The following 2011 dates are excluded from the CIU Racing Club Members Special Offer of 50% off Grandstand Admission: Live Music Nights in 2011 - Saturday 14th May, Saturday 25th June and Saturday 13th August. St. Leger Ladies Day - Thursday 8th September. St. Leger Day - Saturday 10th September. Free race day: advance reservation required. Tickets limited to two per person. All offers subject to availability and prices subject to change. All details correct at time of going to print 15/02/11.



CIU RACING CLUB



To take advantage of the offers fill in the form below and send it to us **THREE WEEKS** before the meeting. **IF WE DO NOT RECEIVE THE BOOKING THREE WEEKS BEFORE WE CANNOT GUARANTEE YOU WILL RECEIVE YOUR DISCOUNT.** To obtain the discount we send all the forms to the racecourse together and they will send you the tickets about a week before the meeting.

Remember all racecourses offer reductions for groups so if the meeting you want to attend is not listed ring the racecourse direct.
To register your club as a member of the CIU Racing Club ring Jean Garrett on (0191) 265 0040. As well as receiving regular updates you will receive a free copy of *Club Journal*.

LATER this month the very best of National Hunt racing comes to Cheltenham, with the four-day Festival meeting, which is celebrating its centenary, as eagerly anticipated as ever.

Centrepiece of the meeting is the £500,000 totospot Cheltenham Gold Cup, for which Nigel Twiston-Davies' locally-trained **Imperial Run** is a worthy ante-post

favourite to defend his crown, having won Haydock's Betfair Chase in November in smart style. Paul Nicholls expects to field both previous winners **Kauto Star** and **Denman**, and it would be unwise to rule the latter horse from giving Imperial Run a run for his money if he is at his best on the day.

The £370,000 Stan James Champion Hurdle looks to present a fine winning opportunity for Willie Mullins' Irish-trained **Hurricane Fly**, unbeat-

Queen Mother Champion Chase. Dual winner **Master Minded** landed his last "prep" race, The Victor Chandler Chase at Ascot in January but his victory over Somersby was far from a comfortable one,, and there are plenty of people prepared to write off Paul Nicholls' eight-year-old.

Jockey Tony McCoy admitted, however, that he did not really ride Master Minded to exploit his

strengths, and the horse may still be good enough to land a historic third victory in the Champion Chase. The Ladbrokes World Hurdle is likely to see a clash between Paul Nicholls' **Big Bucks**, already twice winner of the event, and David Pipe's **Grands Crus**. The latter could not have been more impressive when spreadeagling a decent field at Cheltenham in the Rewards4Racing Cleeve Hurdle a few weeks ago.

Colin Tizzard's **Cue Card** is entered

TALKING RACING Gavin Smith

Follow these at the centenary festival

en so far this season and a pleasing winner of the BHP Insurances Irish Champion Hurdle at Leopardstown in January. Last year's Stan James Champion Hurdle victor **Binocular** won Kempton's Christmas Hurdle and Sandown's Contenders Hurdle during his Festival preparation, but the Mullins horse could be the one to lower the champion's colours. Donald MacCain's **Peddler's Cross** may represent decent each-way value in the leading hurdle event.

The third of Cheltenham's "big three" races is the £320,000 sportingbet.com

in both the Champion Hurdle and the Stan James Supreme Novices Hurdle. Last year's runaway Weatherby's Champion Bumper winner is more likely to tackle the novices' event, and if doing so will surely prove hard to beat. Willie Mullins' **Zaidpour** is likely to be one of the main dangers.

Anyone fancying a bet on who will emerge as the Festival's leading trainer should consider backing either Nicky Henderson or Nigel Twiston-Davies.

Good luck and enjoyable punting!

Race Discounts 2011

(All meetings Tattersalls unless stated otherwise)

LISTED below is a selection of discounts for the rest of 2011. A full list of offers will be sent to registered Racing Club members.

SALTBURN HOUSE, the Union's holiday and convalescent centre on the north Yorkshire coast is again offering racing breaks. Full details - Page 8.

Satellite racing channel RACING UK is offering all CIU clubs a 30 per cent discount. For further details ring 0870 351 8834.

NEWBURY: Saturday, March 26	£11 (normally £15)
MARKET RASEN: Sunday, April 3	£12 (normally £14)
AINTREE: Thursday, April 7 (Grand National meeting)	£16 (normally £23)
ASCOT: Sunday, April 10	£11 (normally £17)
HAYDOCK: Saturday, April 16 (evening)	£11 (normally £20)
LEICESTER: Saturday, April 16	£9 (normally £16)
NEWBURY: Saturday, April 16	£11 (normally £15)
RIPON: Saturday April 16	£12 (normally £15)
CARLISLE: Saturday, April 23	£8 (normally £12)
HAYDOCK: Saturday, April 23	£11 (normally £20)
NOTTINGHAM: Saturday, April 23 (evening)	£12 (normally £14)
MARKET RASEN: Easter Monday, April 25	£14 (normally £16)
REDCAR: Easter Monday, April 25	£11 (normally £15)
LEICESTER: Friday, April 29 (Royal Wedding Day)	£7 (normally £12)
BEVERLEY: Bank Holiday Monday, May 2	£10 (normally £13)
AINTREE: Friday, May 6 (evening)	£11 (normally £20)
ASCOT: Friday, May 6 (evening)	£11 (normally £17)
ASCOT: Saturday May 7	£11 (normally £17)
HAYDOCK: Saturday, May 7	£11 (normally £20)
NOTTINGHAM: Saturday, May 7	£12 (normally £14)

A day out for £10

NORTHERN Racing, who operate Bath, Brighton, Chepstow, Fontwell, Ffos Las, Great Yarmouth, Hereford, Newcastle, Sedgefield and Uttoxeter Racecourses, are again offering their £10 across-the-board deal for Grandstand & Paddock tickets throughout 2011. The offer applies to all meetings except certain feature days like Plate Day at Newcastle, the Midlands and Welsh Grand Nationals, and Ladies Days.

Fri, Apr 1 Newcastle	Fri, Apr 15 (eve) Brighton, Chepstow	Tues, Apr 26 (eve) Sedgefield
Sat, Apr 2 Chepstow, Uttoxeter	Tues, Apr 19 Fontwell	Wed, Apr 27 (eve) Newcastle
Thur, Apr 7 Hereford	Tues, Apr 19 (eve) Bath	Thurs, Apr 28 Bath, Hereford
Fri, April 8 Fontwell, Newcastle	Wed, Apr 20 Hereford	Thurs, Apr 28 (eve) Brighton
Sat, Apr 9 Chepstow	Wed, Apr 20 (eve) Newcastle	Fri, Apr 29 (eve) Fontwell
Mon, Apr 11 (eve) Ffos Las	Easter Mon, Apr 25 Yarmouth, Ffos Las,	
Thur, April 14 (eve) Sedgefield	Tue, Apr 26 Yarmouth	

READ US AT HOME ... and pay less

Here's your chance to have your own personal copy of *Club Journal* for less than you'd pay for it at the club.

Fill in this form to obtain a year's supply of *Club Journal* for £7.00. This means that not only will we send you your copy post-free to your home if you wish, but two of the 12 editions will be yours for FREE.

Please send me a year's supply of *Club Journal*. I enclose a cheque for £7.00 made payable to the Club & Institute Union.

Name:

Home Address:

Club:

Please send your order to *Club Journal*,
Unit 17, St Peter's Wharf, Newcastle upon Tyne NE6 1TZ.

CIU Racing Club Booking Form

Number of tickets required (minimum 6) _____ Price per ticket £ _____

Racecourse _____ Date of meeting: _____

Cheque enclosed for £ _____
(Made payable to racecourse involved).

Club: _____

Club Address: _____

Post code: _____

Contact Name: _____

DAYTIME telephone No: _____

Please send this booking form plus cheque
(made payable to the appropriate racecourse) at least three weeks prior
to meeting to: Jean Garrett, Club Journal,

UNIT 17, ST. PETER'S WHARF, NEWCASTLE UPON TYNE NE6 1TZ.

NEW CHAMPS MAKE IT A FAMILY AFFAIR



Brothers Adam and Kenny Kocyk from Burnholme Social Club in York receive the National 5s and 3s trophy from Leicestershire Branch Games Secretary Dave Rollason. In the final at New Parks Social Club in Leicester they defeated G Hackett and R O'Brien from Swarcliffe WMC in Leeds, who are pictured (below) with their runners-up mementoes.



TWO family teams have joined the ranks of our National Games champions. Father and son John and Ian Tabor from Ponders End WMC in North London won the National Cribbage pairs while brothers Adam and Kenny Kocyk are our new dominoes 5s and 3s champions.

The pair from York's Burnholme Social Club came out on top in the combined semi-finals and final at New Parks Social Club in Leicester.

In the first semi-final they defeated B Lyne and G Hudson from Bedworth Ex-Servicemen's Club, Warwickshire 3-0. In the other semi-final G Hackett and R O'Brien from Swarcliffe WMC, Leeds beat R Crouch and D Webster from Hayes WMC, Middlesex.

In the all-Yorkshire final the brothers opened up a 2-0 lead before their opponents halved the arrears. They then won the fourth leg to claim the championship crown 3-1.

National Cribbage Pairs Championship

THIS was held on February 5 at the Newark Club in Nottinghamshire.

The teams were: C Phillips and T Baker, Bexleyheath WMC, Kent; J Tabor and I Tabor, Ponders End, Middlesex; G Lewis and A Dunmore, Rushden WMC, Northants; C Smith and S Bowen, Grange Villa, Co Durham.

In the first semi-final Lewis and Dunmore beat Phillips and Baker 3-1 while in the other semi-final the Tabors beat Smith and Bowen 3-1. In a tight final the Ponders End pair went on to triumph by 3 games to 2.

National Dominoes Straights Championship

THIS was due to be held at the Mansfield Woodhouse Club in Notts on February 26 after *Club Journal* went to press.

The teams were: P Dove and B Hedley, Newcastle upon Tyne Labour; J Fernandez and D Burke, Chobham Club, Surrey; M Tustin and D Olnier, Bedworth Ex-Servicemen's Club, Warwickshire; J Fisher and G Elvin, Doncaster Trades.

A full report will appear in our next issue.



Father and son John and Ian Tabor from Ponders End WMC in Middlesex are pictured with their National Cribbage trophies.

Results and draws for all Championships can now be found on the WMCIU website www.wmciu.org.uk along with other information regarding recreation activities.

SPORTS SHORTS



Valda Edmunds

● Can I remind clubs that automatic disqualification will happen if a completed result sheet is not received by the closing date. If you leave it to the last minute to play the game you will always run the risk of not getting the result in on time.

Some prominent competitors have already been disqualified for this reason. Never rely on somebody else to post it.

30% OFF FOR CIU MEMBERS*

15-18 March
THE CHELTENHAM FESTIVAL
GET YOUR CLUB JUMPING

Racing UK, the only place to watch every race live.

From **£2** per day
No SKY subscription needed!

RACING UK
PURE RACING ENTERTAINMENT

CALL 0870 351 8834 TO SUBSCRIBE
*Terms and conditions apply

www.racinguk.com/business

CellarBright
for clean beer & clear profit!

FOUR QUESTIONS TO ASK YOURSELF

- ✓ Do you want to increase the sales of beer from every barrel you purchase?
- ✓ Can you really afford to keep wasting good beer in a manual cleaning process?
- ✓ Do you want to serve consistently high quality beer and retain your regulars?
- ✓ Do you want to make life easier and avoid the pressure on bar prices?

THE BRIGHT ANSWER

- ✓ CellarBright™ - No time to lose, call us today! To reduce your wastage and increase your sales return from beer purchases.

Telephone: 0845 626 2290 Email: sales@cellarbright.co.uk
www.cellarbright.co.uk